



# Acu-Tech Pty Ltd

## PRODUCT APPRAISAL REPORT 2039 Issue 2

Sewerstream Polyethylene (PE) Fabricated Fittings for Non-pressure Sewerage Applications

**AS/NZS 5065:2005 Polyethylene and polypropylene pipes and fittings for drainage and sewerage applications**

Issue 1 Published: 5 January 2021

Issue 2 Published: 5 December 2024

## Document History

The following information indicates the changes made to this document.

Date	Version
9 December 2020	Client Review
9 December 2020	Peer Review
5 January 2021	Publication
4 December 2024	Issue 2 Client Review
5 December 2024	Issue 2 Publication

## Peer Reviewers

Name/Title	Organisation	Date
Product Appraisal Technical Advisory Group	WSAA	22 December 2020
WSAA Expert Panel	WSAA	22 December 2020
Peter Pittard, WSAA Consultant	WSAA	14 November 2020
Carl Radford, Product Appraisal Manager	WSAA	5 January 2021
Peter Pittard, WSAA Consultant	WSAA	3 December 2024
Carl Radford, Product Appraisal Manager	WSAA	4 December 2024

## Overview of WSAA

The Water Services Association of Australia (WSAA) is the peak industry body representing the urban water industry. Our members provide water and sewerage services to over 20 million customers in Australia and New Zealand and many of Australia's largest industrial and commercial enterprises.

Based around our vision of 'customer driven, enriching life', WSAA facilitates collaboration, knowledge sharing, networking and cooperation within the urban water industry. We are proud of the collegiate attitude of our members which has led to industry-wide approaches to national water issues.

WSAA can demonstrate success in the standardisation of industry performance monitoring and benchmarking, as well as many research outcomes of national significance. The WSAA Executive retains strong links with policy makers and legislative bodies and their influencers, to monitor emerging issues of importance to the urban water industry.

WSAA was formed in 1995 as a non-profit organisation to foster the exchange of information between industry, government and the community, and to promote sustainable water resource management.

The urban water industry is committed to anchoring its services to customers' values, and to enrich communities where water services have broad economic, environmental and social values. In line with this our main activities focus on four areas:

1. influencing national and state policies on the provision of urban water services and sustainable water resource management
2. promoting debate on environmentally sustainable development and management of water resources and the community health requirements of public water supplies
3. improving industry performance and establishing benchmarks and industry leading practices for water service processes; and
4. fostering the exchange of information on education, training, research, water and wastewater management and treatment and other matters of common interest.

## Copyright

This document is copyrighted. Apart from any use as permitted under the Copyright Act 1968, no part of this document may be reproduced or transmitted in any form or by any means, electronically or mechanical, for any purpose, without the express written permission of Water Services Association of Australia Limited.

© Copyright 2024 by WATER SERVICES ASSOCIATION of Australia Limited **All rights reserved.**

## CONTENTS

1 EXECUTIVE SUMMARY .....	5
1.1 Recommendations .....	5
2 THE APPLICANT .....	5
2.1 The Manufacturer and Supplier .....	5
3 THE PRODUCT.....	6
4 SCOPE OF THE APPRAISAL.....	7
5 APPRAISAL CRITERIA.....	7
5.1 Quality Assurance Requirements .....	7
5.2 Performance Requirements .....	7
6 COMPLIANCE WITH APPRAISAL CRITERIA.....	8
6.1 Compliance with Quality Assurance Requirements .....	8
6.2 Compliance with Performance Requirements.....	8
6.2.1 Materials.....	8
6.2.2 Type tests.....	8
7 FITTING INSTRUCTIONS, TRAINING AND INSTALLATION .....	9
8 PRODUCT MARKING .....	9
9 PACKAGING AND TRANSPORTATION .....	9
10 PRODUCT WARRANTY .....	9
11 WATER AGENCY EXPERIENCE WITH THE PRODUCT OR FIELD-TESTING REPORT.....	9
12 OUTCOMES OF EXPERT PANEL PRODUCT REVIEW.....	9
13 FUTURE WORKS .....	9
14 DISCLAIMER.....	10
14.1 Issue of Report.....	10
14.2 Limits on Reliance on Information and Recommendations.....	10
14.2.1 Disclaimer of liability.....	10
14.2.2 Intellectual Property and other rights.....	10
14.2.3 Need for independent assessment.....	11
14.3 No Updating .....	11
14.4 No Warranty.....	11
APPENDIX A – PRODUCT LITERATURE.....	12
APPENDIX B - QUALITY CERTIFICATIONS .....	14
APPENDIX C- SUPPLIER CONTACTS .....	23

## 1 EXECUTIVE SUMMARY

Acu-Tech Pty Ltd is a manufacturer and supplier of thermoplastic pipeline systems for fluid and gas transfer and cable protection. Products are manufactured primarily from polyethylene materials and are utilized for a wide range of applications in the plumbing, mining, civil and mechanical services markets.

This appraisal is for a range of Sewerstream PE SN8 fabricated fittings for non-pressure sewerage applications, manufactured in conformance with AS/NZS 5065:2005 *Polyethylene and polypropylene pipes and fittings for drainage and sewerage applications*, in sizes DN 110, DN 160, DN 250 and DN 315.

This Issue 2 is to amend the Applicant from All-Mach Pneumatic and Fluid Systems Pty Ltd to Acu-Tech Pty Ltd. Acu-Tech acquired the All-Mach PE fabrication business in May 2023. This issue is also a replacement for the previous version of the appraisal which will reach its 5-year expiry date in January 2025.

The range includes junctions, adaptors, backdrops, end caps, reducers and puddle flanges. See Section 3 for details.

The components utilised in the fabrication of the Sewerstream fittings include:

- PE pipes: SN8 (SDR21) PE100 pipe manufactured to AS/NZS 5065 or AS/NZS 4130.
- PE fittings: PN8 (SDR21) moulded bends and caps manufactured to AS/NZS 5065.
- PE sweep bends: SN8 (SDR21) manufactured to AS/NZS 5065 or AS/NZ 4129.
- PVC adaptor: manufactured to AS/NZS 1260.

Fabrication of the Sewerstream fittings is carried out at the Acu-Tech manufacturing facility in Pinkenba Queensland.

Acu-Tech Pty Ltd holds an ISO 9001:2015 Quality Management System Licence.

The Sewerstream PE fabricated fittings have ISO Type 5 ApprovalMark Product Certification to AS/NZS 5065:2005 *Polyethylene and polypropylene pipes and fittings for drainage and sewerage applications*.

This Appraisal has determined that Acu-Tech Sewerstream PE fabricated fittings, as detailed in this report, meet the requirements of WSA PS 242 *Polyethylene (PE) plain wall pipes and fittings for non-pressure applications - Sewerage* and are considered as 'fit for purpose'.

### 1.1 Recommendations

It is recommended that WSAA members, subject to any specific requirements of the member, accept or authorise the Acu-Tech Sewerstream range of PE fabricated fittings, as detailed in this report, for use in non-pressure sewerage applications, provided they are installed in accordance with any relevant conditions relating to design, installation, and acceptance testing provided in relevant standards, WSAA codes and the manufacturer's requirements.

## 2 THE APPLICANT

The Applicant is Acu-Tech Pty Ltd.

### 2.1 The Manufacturer and Supplier

Acu-Tech Pty Ltd is a privately owned and operated company headquartered in Perth with branches in Kalgoorlie, Melbourne and Brisbane. The company was established in 2000 and is a manufacturer and supplier of polyethylene pipeline systems for the plumbing, mining, irrigation and civil industries. Acu-Tech provides a complete pipeline system package including pipes, fittings, fusion welding equipment, training and technical support.

Acu-Tech acquired the All-Mach PE fabrication business in May 2023. Sewerstream fittings are fabricated at Acu-Tech's Pinkenba Queensland facility.

### 3 THE PRODUCT

This appraisal is for a range of Sewerstream PE fabricated fittings for non-pressure sewerage applications, manufactured in conformance with AS/NZS 5065:2005 *Polyethylene and polypropylene pipes and fittings for drainage and sewerage applications*, in sizes DN 110, DN 160, DN 250 and DN 315.

The range includes junctions, adaptors, backdrops, end caps, reducers and puddle flanges. See Section 3 for details.

The components utilised in the fabrication of the Sewerstream fittings include:

- PE pipes: SN8 (SDR21) PE100 pipe manufactured to AS/NZS 5065 or AS/NZS 4130.
- PE fittings: PN8 (SDR21) moulded bends and caps manufactured to AS/NZS 5065.
- PE sweep bends: SN8 (SDR21) manufactured to AS/NZS 5065 or AS/NZS 4129.
- PVC adaptor: manufactured to AS/NZS 1260.

The range of fittings covered by this appraisal is detailed in Table 1.

**TABLE 1  
PE FABRICATED FITTINGS FOR NON-PRESSURE SEWERAGE APPLICATIONS**

Description	Size	
45° JUNCTIONS	110 x 110, 160 x 110, 160 x 160, 250 x 110, 250 x 160, 250 x 250, 315 x 110, 315 x 315	
88° SWEEP JUNCTIONS	110 x 110, 160 x 110, 160 x 160, 250 x 110, 250 x 160, 250 x 250, 315 x 110, 315 x 160, 315 x 315	
TYPE C SWEEP JUNCTION	110 x 110, 160 x 160, 160 x 110, 250 x 160,	
PUDDLE FLANGES	110, 160, 250, 315	
PE - PVC ADAPTORS	110 x 100, 160 x 150, 250 x 225, 315 x 300	
END CAPS	110, 160, 250, 315	

Description	Size	
EXTERNAL 90° BACKDROP BENDS	110, 160, 250, 315	
INTERNAL 90° BACKDROP BENDS	110, 160, 250, 315	
EXTERNAL 90° BACKDROP JUNCTIONS	110, 160, 250, 315	
INTERNAL 90° BACKDROP JUNCTIONS	110, 160, 250, 315	
EXTERNAL 45° BACKDROP JUNCTION	110, 160, 250, 315	
ECCENTRIC REDUCER	160 - 110	

#### 4 SCOPE OF THE APPRAISAL

The scope of this Appraisal is for a range of DN 110 to DN 315 PE fabricated fittings for non-pressure sewerage applications, as detailed in Section 3 and included in the ISO Type 5 ApprovalMark Product Certification schedule included in Appendix B.

#### 5 APPRAISAL CRITERIA

##### 5.1 Quality Assurance Requirements

The WSAA Product Appraisal Technical Advisory Group accepts PE fabricated fittings for non-pressure applications manufactured in compliance with AS/NZS 5065:2005 *Polyethylene and polypropylene pipes and fittings for drainage and sewerage applications*

The manufacturer is expected to have a production management and control system that has been duly accredited in accordance with AS/NZS ISO 9001 as a prerequisite to undergoing a product certification audit.

The ISO Type 5 Product Certification Scheme shall meet the criteria described in WSA TN-08.

##### 5.2 Performance Requirements

Acu-Tech Sewerstream PE fabricated fittings have been appraised for compliance with AS/NZS 5065.

Appraisal criteria are also determined by the WSAA Product Appraisal Technical Advisory Group and regularly reviewed to ensure that the criteria reflect the requirements of WSAA members.

The following Product Specification is relevant to this application:

WSA PS 242 *Polyethylene (PE) plain wall pipes and fittings for non-pressure applications – Sewerage.*

A copy of the Product Specification is available at the following link:

<https://wsaa.asn.au/Web/web/shop/ShopSearch.aspx?category=PRODSPECS>

## **6 COMPLIANCE WITH APPRAISAL CRITERIA**

### **6.1 Compliance with Quality Assurance Requirements**

Acu-Tech has submitted the following quality certificates:

- ISO 9001:2015 Certificate of Registration No. AMI-QM 75367 issued to Acu-Tech Pty Ltd by ApprovalMark International.
- AS/NZS 5065:2005 ISO Type 5 ApprovalMark Product Certification Licence No. AMI 75091 issued to Acu-Tech Pty Ltd.

Copies of the Quality Assurance has been included in Appendix B and copies of supplier's certificates are available from WSAA.

Copies of Quality Assurance certificates have also been supplied for other component suppliers.

### **6.2 Compliance with Performance Requirements**

#### **6.2.1 Materials**

The components utilised in the fabrication of the fittings include the following:

- PE pipes are SN8 PN8 SDR21 manufactured in conformance with AS/NZS 5065 at Acu-Tech's Redbank Queensland facility or manufactured in conformance with AS/NZS 4130 at Acu-Tech's Maddington WA facility.
- The moulded PE fittings are SN8 PN8 SDR21, manufactured in conformance with AS/NZS 5065 by Wavin and included in Acu-Tech's AS/NZS 5065 Product Certification.
- The sweep bends are SN8 PN8 SDR21 manufactured in conformance with AS/NZS 5065 at Acu-Tech's Pinkenba Queensland facility or in conformance with AS/NZS 4129 at Acu-Tech's Maddington facility.
- The PVC adaptor fittings are manufactured in conformance with AS/NZS 1260:2017 and manufactured by Plastec Australia Pty Ltd.

The above components are all covered by ISO Type 5 Product Certification. Copies of the licences are held on file by WSAA.

Where products are sourced from alternative suppliers Acu-Tech will ensure that they are covered by ISO Type 5 Product Certification.

#### **6.2.2 Type tests**

AS/NZS 5065 type test requirements for the fabricated fittings include dimensional, hydrostatic pressure resistance, liquid infiltration, effect of heating (for fittings incorporating moulded fittings) and mechanical strength and flexibility test (for fittings with junctions).

Copies of test reports from Queensland Testing Laboratory (NATA Accreditation No. 14783), Partec (Qld) Pty Ltd (NATA Accreditation No. 17214) and Polyweld Tech (NATA Accreditation No. 19158) have been submitted to demonstrate compliance with the type test requirements of AS/NZS 5065.



## 7 FITTING INSTRUCTIONS, TRAINING AND INSTALLATION

Fabricated PE fittings have been utilised for non-pressure PE sewerage applications for many years now and installation practices are well established. Installation procedures are provided in AS/NZS 2566.2 *Buried flexible pipelines Part 2 Installation*.

Acu-Tech does not provide specific installation training for installers.

## 8 PRODUCT MARKING

Marking are in accordance with AS/NZS 5065 requirements and are included on a sticker attached to the fitting:

- Manufacturers name or trademark: ACU-TECH Sewerstream
- Nominal size and Product Description: e.g., 250x160 Reducing Junction
- Material: PE
- Material Class: SDR21
- Date: e.g., 28/06/24
- Product code: e.g., SSJ251645
- Standard No: AS/NZS 5065
- Certification Licence No: AMI 75091



FIGURE 1 EXAMPLE OF MARKING

## 9 PACKAGING AND TRANSPORTATION

The PE fabricated fittings are packed into cardboard cartons and strapped to timber pallets for transportation.

## 10 PRODUCT WARRANTY

The products are covered by the normal commercial and legal requirements of the *Competition and Consumer Act 2010 (Cth)*, which covers manufacture to the relevant standard, and details of Acu-Tech's warranty is included in their terms and conditions of sale.

## 11 WATER AGENCY EXPERIENCE WITH THE PRODUCT OR FIELD-TESTING REPORT

Sewerstream PE fabricated fittings have been used by water agencies for many years.

## 12 OUTCOMES OF EXPERT PANEL PRODUCT REVIEW

No issues were raised.

## 13 FUTURE WORKS

No future works have been identified.

## **14 DISCLAIMER**

This Product Appraisal Report (Report) is issued by the Water Services Association of Australia Limited on the understanding that:

This Report applies to the product(s) as submitted. Any changes to the product(s) either minor or major shall void this Report.

To maintain the recommendations of this Report any such changes shall be detailed and notified to the Product Appraisal Manager for consideration and review of the Report and appropriate action. Appraisals and their recommendations will be the subject of continuous review dependent upon the satisfactory performance of products.

WSAA reserves the right to undertake random audits of product manufacture and installation. Where products fail to maintain appraised performance requirements the appraisal and its recommendations may be modified and reissued. Appraisal reports will be reviewed and reissued at regular intervals not exceeding five (5) years.

The following information explains a number of very important limits on your ability to rely on the information in this Report. Please read it carefully and take it into account when considering the contents of this Report.

Any enquiries regarding this report should be directed to the Program Manager, Carl Radford, email [carl.radford@wsaa.asn.au](mailto:carl.radford@wsaa.asn.au).

### **14.1 Issue of Report**

This Report has been published and/or prepared by the Water Services Association of Australia Limited and nominated Project Manager and peer group of technical specialists (the Publishers).

The Report has been prepared for use within Australia only by technical specialists that have expertise in the function of products such as those appraised in the Report (the Recipients).

By accepting this Report, the Recipient acknowledges and represents to the Publisher(s) and each person involved in the preparation of the Report that the Recipient has understood and accepted the terms of this Disclaimer.

### **14.2 Limits on Reliance on Information and Recommendations**

#### **14.2.1 Disclaimer of liability**

Neither the Publisher(s) nor any person involved in the preparation of the Report accept(s) any liability for any loss or damage suffered by any person however caused (including negligence or the omission by any person to do anything) relating in any way to the Report or the product appraisal criteria underlying it. This includes (without limitation) any liability for any recommendation or information in the Report or any errors or omissions.

#### **14.2.2 Intellectual Property and other rights**

The Water Services Association of Australia Limited does not undertake any assessment of whether the importation, manufacture, sale or use of the Product the subject of this Report infringes the intellectual property rights or proprietary rights of any person. Recipients of the report should undertake their own assessment of whether (as relevant) the importation, manufacture, sale or use of the relevant Products infringe the intellectual property rights or other proprietary rights of any person. If the Product infringes intellectual property rights or other proprietary rights there is potential for the supply of the Products to be interrupted.

From time to time the Water Services Association of Australia Limited and the other Publishers may receive notice of allegations that the importation, manufacture, sale or

use of the Product infringes intellectual property rights or other proprietary rights. The Water Services Association of Australia Limited's policy is to not refer to such allegations in its reports or take any other steps to put Recipients on notice of such allegations, unless and until it is aware that the allegations have been admitted or proved in Court. As such, Recipients acknowledge, agree and accept that the Water Services Association of Australia Limited may have information in its possession about intellectual property rights infringement allegations or other infringement allegations in relation to the Product which are not referred to or disclosed in this Report and which are not otherwise communicated to Recipients.

#### **14.2.3 Need for independent assessment**

The information and any recommendation contained (expressly or by implication) in this Report are provided in good faith (and subject to the limitations noted in this Report). However, you should treat the information as indicative only. You should not rely on that information or any such recommendation except to the extent that you reach an agreement to the contrary with the Publisher(s).

This Report does not contain all information that a person might require for the purposes of assessing any product discussed or appraised within it (Product). The product appraisal criteria used in preparing this Report may not address all relevant aspects of the Product.

Recipients should seek independent evidence of any matter which is material to their decisions in connection with an assessment of the Product and consult their own advisers for any technical information required. Any decision to use the Product should take into account the reliability of that independent evidence obtained by the Recipient regarding the Product.

Recipients should also independently verify and assess the appropriateness of any recommendation in the Report, especially given that any recommendation will not take into account a Recipient's particular needs or circumstances.

WSAA has not evaluated the extent of the product liability and professional indemnity insurance that the provider of the product maintains. Recipients should ensure that they evaluate the allocation of liability for product defects and any professional advice obtained in relation to the product or its specification including the requirements for product liability and professional indemnity insurance.

#### **14.3 No Updating**

Neither the Publisher(s) nor any person involved in the preparation of this Report [has] [have] any obligation to notify you of any change in the information contained in this Report or of any new information concerning the Publisher(s) or the Product or any other matter.

#### **14.4 No Warranty**

The Publisher(s) do[es] not, in any way, warrant that steps have been taken to verify or audit the accuracy or completeness of the information in this Report, or the accuracy, completeness or reasonableness of any recommendation in this Report.

## APPENDIX A – PRODUCT LITERATURE

### SWEEP JUNCTION - EQUAL

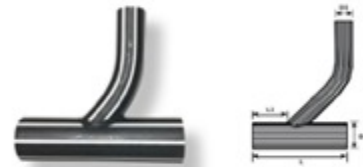
SIZE	CODE	D1	D2	L	L2
110mm	SSSWJ110	110	110	600	220
160mm	SSSWJ160	160	160	600	190



SDR21 fittings are standard. Higher SDR ratings are available upon request.

### SWEEP JUNCTION - REDUCING

SIZE	CODE	D1	D2	L	L2
160mm x 110mm	SSSWJR1611	160	110	600	230
250mm x 110mm	SSSWJR2511	250	110	700	280
250mm x 160mm	SSSWJR2516	250	160	700	190
315mm x 110mm	SSSWJR3111	315	110	-	-
315mm x 160mm	SSSWJR3116	315	160	-	-



SDR21 fittings are standard. Higher SDR ratings are available upon request.

### JUNCTION - EQUAL

SIZE	CODE	D	L	L2	H
110mm	SSJ111145	110	600	220	360
160mm	SSJ161645	160	600	190	450
250mm	SSJ252545	250	900	250	550



SDR21 fittings are standard. Higher SDR ratings are available upon request.

### JUNCTION - REDUCING

SIZE	CODE	D	D2	L	L2
160 x 110mm	SSJ161145	160	110	600	450
250 x 110mm	SSJ251145	250	110	600	450
250 x 160mm	SSJ251645	250	160	700	600



SDR21 fittings are standard. Higher SDR ratings are available upon request.

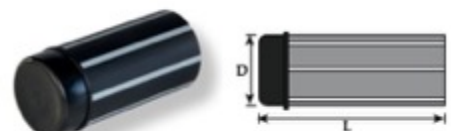
### JUNCTION - TYPE C

SIZE	CODE	D	D2	L
110 x 110mm	SSJC1111	110	110	600
160 x 160mm	SSJC1616	160	160	600
160 x 110mm	SSJC1611	160	110	600



### END CAP

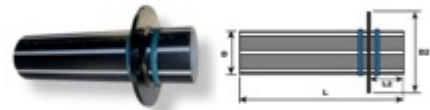
SIZE	CODE	D	L
110mm	SSEC110	110	260
160mm	SSEC160	160	280
250mm	SSEC250	250	330
315mm	SSEC315	315	358



SDR21 fittings are standard. Higher SDR ratings are available upon request.

**PUDDLE FLANGE**

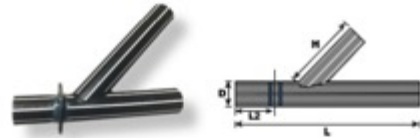
SIZE	CODE	D1	D2	L	L2
110mm	SSPF110HS	110	250	600	125
160mm	SSPF160HS	160	300	600	125
250mm	SSPF250HS	250	390	600	125
315mm	SSPF315HS	315	455	600	125
400mm	SSPF400HS	400	550	600	125
450mm	SSPF450HS	450	600	600	125



SDR21 fittings are standard. Higher SDR ratings are available upon request.

**EXTERNAL 45° BACKDROP JUNCTION**

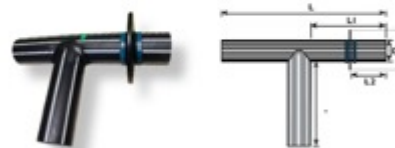
SIZE	CODE	D	L	L2	H
160mm	SSBJ1645AB	160	1000	125	900
250mm	SSBJ2545AB	250	1000	125	900



SDR21 fittings are standard. Higher SDR ratings are available upon request.

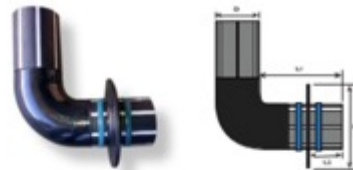
**EXTERNAL 90° BACKDROP JUNCTION**

SIZE	CODE	D	D2	L	L1	L2	H
110mm	SSBJ1190	110	250	600	300	125	400
160mm	SSBJ1690	160	300	750	300	125	400
250mm	SSBJ2590	250	380	1000	400	125	500



**EXTERNAL 90° BACKDROP BEND**

SIZE	CODE	D	D2	L1	L2
110mm	SSBB1190	110	250	300	125
160mm	SSBB1690	160	300	300	125
250mm	SSBB2590	250	380	400	125



**INTERNAL 90° BACKDROP JUNCTION**

SIZE	CODE	D	L	L2
110mm	SSBJI1190	110	750	125
160mm	SSBJI1690	160	750	125
250mm	SSBJI2590	250	1100	125



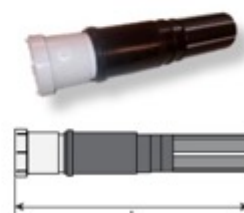
**INTERNAL 90° BACKDROP BEND**

SIZE	CODE	D	L	H
110mm	SSBBI1190	110	100	300
160mm	SSBBI1690	160	100	300
250mm	SSBBI2590	250	100	400



**PVC TO POLYETHYLENE ADAPTOR**

SIZE	CODE	L
110mm	SSADP1110	580
160mm	SSADP1615	520
250mm	SSADP2522	900
315mm	SSADP3130	-



## APPENDIX B - QUALITY CERTIFICATIONS

Copies of the following Quality Certificates are available from WSAA.

### TABLE B1 ACU-TECH PTY LTD – MANAGEMENT SYSTEMS

5/272 Lavarack Avenue Pinkenba Qld	
Quality Systems Standard	ISO9001:2015
Certification Licence No.	AMI-QM 75367
Certifying Agency	ApprovalMark International
First Date of Certification	16 November 2020
Current Date of Certification	26 August 2024
Expiry Date of Certification	26 November 2026

### TABLE B2 ACU-TECH PTY LTD – PRODUCT CERTIFICATION

5/272 Lavarack Avenue Pinkenba Qld	
Product Standard/Spec.	AS/NZS 5065:2005
Certificate No.	AMI 75091
Issuing Certification Body	ApprovalMark International
First Date of Certification	6 August 2024
Current Date of Certification	6 August 2024
Expiry Date of Certification	6 August 2029

# CERTIFICATE OF REGISTRATION



*ApprovalMark International* hereby grants:

## Acu-Tech Pty Ltd

Site 1 - 119 Kelvin Road, Maddington, WA 6109, Australia  
Site 2 - 42A River Road, Redbank, QLD 4301, Australia  
Site 3 - 5/272 Lavarack Avenue, Pinkenba, QLD 4008, Australia

Evaluated to:

**ISO 9001:2015 - Quality management systems**

**This covers the following scope:**

"Manufacture, supply and distribution of high performance polyethylene pipes, conduits and fittings for pressure and non-pressure applications across multiple industries"

**Certificate No. AMI-QM 75367**

**Issued: 26<sup>th</sup> August 2024**

**Originally Certified: 16<sup>th</sup> November 2020**

**Expires: 26<sup>th</sup> November 2026**

**Current Certification: 26<sup>th</sup> August 2024**

**John PRASAD**

Director

ApprovalMark International Pty Ltd  
18/33 Holbeche Road, Arndell Park 2148, Australia  
[www.approvalmark.com](http://www.approvalmark.com)



Registered by: ApprovalMark International Pty Ltd (ABN 69 143 259 974) Unit 18, 33 Holbeche Road, Arndell Park NSW 2148 Australia. The assessment was carried with appropriate skill and assessment by ApprovalMark International Pty Ltd; however it will only accept its responsibility for proven negligence. The certificate remains the property of ApprovalMark International Pty Ltd.

# ISO 9001

# ApprovalMark

# ISO TYPE 5

## CERTIFICATE OF CONFORMITY



*ApprovalMark International* hereby grants:

### Acu-Tech Pty Ltd

5/272 Lavarack Avenue  
Pinkenba, QLD 4008  
Australia

### ISO Type 5 Certificate of Conformity

Evaluated to:

### AS/NZS 5065:2005 – Polyethylene and polypropylene pipes and fittings for drainage and sewerage applications

The ISO Type 5 License shall comply with all the terms and conditions as stipulated by the governance of the operating rules of the ISO Type 5 Scheme and shall comply with the standard requirements at all times including when the standard is amended. The ISO Type 5 License only covers the product which is identified in the attached product schedule.

### Certificate No. AMI 75091

Issued: 6<sup>th</sup> August 2024

Original Issue: 6<sup>th</sup> August 2024

Expires: 6<sup>th</sup> August 2029

**John PRASAD**

Director

ApprovalMark International Pty Ltd  
18/33 Holbeche Road, Arndell Park 2148, Australia  
[www.approvalmark.com](http://www.approvalmark.com)



**Registered by:** ApprovalMark International Pty Ltd (ABN 69 143 259 974) Unit 18, 33 Holbeche Road, Arndell Park NSW 2148 Australia. The assessment was carried with appropriate skill and assessment by ApprovalMark International Pty Ltd, however it will only accept its responsibility for proven negligence. The certificate remains the property of ApprovalMark International Pty Ltd.





# Product Schedule

## Acu-Tech Pty Ltd

5/272 Lavarack Avenue  
Pinkenba, QLD 4008  
Australia

### ISO Type 5 Certificate of Conformity

Evaluated to:

**AS/NZS 5065:2005 – Polyethylene and polypropylene pipes and fittings for drainage and sewerage applications**

Model Id	Model Name	Brand Name	Product Description	Endorsement Date
SSP00006	PIPE - SDR 11,13.6,17,21	Sewer stream	Pipe Length 6000mm - DN110, 125,140,160,180,200,225,250,280,315,3 55,400,450,500,560,630,710,800	6 <sup>th</sup> August 2024
SSP00012	PIPE - SDR 11,13.6,17,21	Sewer stream	Pipe Length 6000mm - DN110, 125,140,160,180,200,225,250,280,315,3 55,400,450,500,560,630,710,801	6 <sup>th</sup> August 2024
SSSB0015000	15° Sweep Bend - SDR 11,13.6,17,21	Sewer stream	DN 110,125,140,160,180,200,225,250,280,3 15,355,400,450,500,560,630,710,800	6 <sup>th</sup> August 2024
SSSB0030000	30° Sweep Bend - SDR 11,13.6,17,21	Sewer stream	DN 110,125,140,160,180,200,225,250,280,3 15,355,400,450,500,560,630,710,800	6 <sup>th</sup> August 2024
SSSB0045000	45° Sweep Bend - SDR 11,13.6,17,21	Sewer stream	DN 110,125,140,160,180,200,225,250,280,3 15,355,400,450,500,560,630,710,800	6 <sup>th</sup> August 2024
SSSB0090000	90° Sweep Bend - SDR 11,13.6,17,21	Sewer stream	DN 110,125,140,160,180,200,225,250,280,3 15,355,400,450,500,560,630,710,800	6 <sup>th</sup> August 2024
SSER0000	Fabricated Eccentric Reducer - SDR 11,13.6,17,21	Sewer stream	DN 110,125,140,160,180,200,225,250,280,3 15,355,400,450,500,560,630,710,800 - MULTIPLE COMBINATIONS	6 <sup>th</sup> August 2024
SSEC110	Fabricated End Cap - SDR 11,13.6,17,21	Sewer stream	DN 110MM SEWER STREAM END CAP EXTENSION FOR EF	6 <sup>th</sup> August 2024
SSEC160	Fabricated End Cap - SDR 11,13.6,17,21	Sewer stream	DN 160MM SEWER STREAM END CAP EXTENSION FOR EF	6 <sup>th</sup> August 2024
SSEC250	Fabricated End Cap - SDR 11,13.6,17,21	Sewer stream	DN 250MM SEWER STREAM END CAP EXTENSION FOR EF	6 <sup>th</sup> August 2024



# Product Schedule

Model Id	Model Name	Brand Name	Product Description	Endorsement Date
SSEC315	Fabricated End Cap - SDR 11,13.6,17,21	Sewer stream	DN 315MM SEWER STREAM END CAP EXTENSION FOR EF	6 <sup>th</sup> August 2024
SSEC355	Fabricated End Cap - SDR 11,13.6,17,21	Sewer stream	DN 355MM SEWER STREAM END CAP EXTENSION FOR EF	6 <sup>th</sup> August 2024
SSEC400	Fabricated End Cap - SDR 11,13.6,17,21	Sewer stream	DN 400MM SEWER STREAM END CAP EXTENSION FOR EF	6 <sup>th</sup> August 2024
SSEC450	Fabricated End Cap - SDR 11,13.6,17,21	Sewer stream	DN 450MM SEWER STREAM END CAP EXTENSION FOR EF	6 <sup>th</sup> August 2024
SSEC500	Fabricated End Cap - SDR 11,13.6,17,21	Sewer stream	DN 500MM SEWER STREAM END CAP EXTENSION FOR EF	6 <sup>th</sup> August 2024
SSEC560	Fabricated End Cap - SDR 11,13.6,17,21	Sewer stream	DN 560MM SEWER STREAM END CAP EXTENSION FOR EF	6 <sup>th</sup> August 2024
SSEC630	Fabricated End Cap - SDR 11,13.6,17,21	Sewer stream	DN 630MM SEWER STREAM END CAP EXTENSION FOR EF	6 <sup>th</sup> August 2024
SSEC710	Fabricated End Cap - SDR 11,13.6,17,21	Sewer stream	DN 710MM SEWER STREAM END CAP EXTENSION FOR EF	6 <sup>th</sup> August 2024
SSEC800	Fabricated End Cap - SDR 11,13.6,17,21	Sewer stream	DN 800MM SEWER STREAM END CAP EXTENSION FOR EF	6 <sup>th</sup> August 2024
SSADP1110	Fabricated Adaptor - SDR 11,13.6,17,21	Sewer stream	110mm PE x 100mm PVC Sewerstream Adaptor	6 <sup>th</sup> August 2024
SSADP1615	Fabricated Junction - SDR 11,13.6,17,21	Sewer stream	160mm PE x 150mm PVC Sewerstream Adaptor	6 <sup>th</sup> August 2024
SSADP2522	Fabricated Junction - SDR 11,13.6,17,21	Sewer stream	250mm PE x 225mm PVC Sewerstream Adaptor	6 <sup>th</sup> August 2024
SSADP3130	Fabricated Junction - SDR 11,13.6,17,21	Sewer stream	315mm PE x 300mm PVC Sewerstream Adaptor	6 <sup>th</sup> August 2024
SSSWJ110	Fabricated Junction - SDR 11,13.6,17,21	Sewer stream	110mm Sewer Stream equal sweep junction	6 <sup>th</sup> August 2024
SSSWJ160	Fabricated Junction - SDR 11,13.6,17,21	Sewer stream	160mm Sewer Stream equal sweep junction	6 <sup>th</sup> August 2024
SSSWJ250	Fabricated Junction - SDR 11,13.6,17,21	Sewer stream	250mm Sewer Stream equal sweep junction	6 <sup>th</sup> August 2024
SSSWJ315	Fabricated Junction - SDR 11,13.6,17,21	Sewer stream	315mm Sewer Stream equal sweep junction	6 <sup>th</sup> August 2024
SSSWJR1611	Fabricated Junction - SDR 11,13.6,17,21	Sewer stream	160mm x 110mm Sewer Stream reducing sweep junction	6 <sup>th</sup> August 2024
SSSWJR2511	Fabricated Junction - SDR 11,13.6,17,21	Sewer stream	250mm x 110mm Sewer Stream reducing sweep junction	6 <sup>th</sup> August 2024



# Product Schedule

Model Id	Model Name	Brand Name	Product Description	Endorsement Date
SSSWJR2516	Fabricated Junction - SDR 11,13.6,17,21	Sewer stream	250mm x 160mm Sewer Stream reducing sweep junction	6 <sup>th</sup> August 2024
SSSWJR3111	Fabricated Junction - SDR 11,13.6,17,21	Sewer stream	315mm x 110mm Sewer Stream reducing sweep junction	6 <sup>th</sup> August 2024
SSSWJR3116	Fabricated Junction - SDR 11,13.6,17,21	Sewer stream	315mm x 160mm Sewer Stream reducing sweep junction	6 <sup>th</sup> August 2024
SSJ111145	Fabricated Junction - SDR 11,13.6,17,21	Sewer stream	110mm x 110mm 45° Sewerstream Junction	6 <sup>th</sup> August 2024
SSJ161645	Fabricated Junction - SDR 11,13.6,17,21	Sewer stream	160mm x 160mm 45° Sewerstream Junction	6 <sup>th</sup> August 2024
SSJ252545	Fabricated Junction - SDR 11,13.6,17,21	Sewer stream	250mm x 250mm 45° Sewerstream Junction	6 <sup>th</sup> August 2024
SSJ313145	Fabricated Junction - SDR 11,13.6,17,21	Sewer stream	315mm x 315mm 45° Sewerstream Junction	6 <sup>th</sup> August 2024
SSJ161145	Fabricated Junction - SDR 11,13.6,17,21	Sewer stream	160mm x 110mm 45° Sewerstream Junction	6 <sup>th</sup> August 2024
SSJ251145	Fabricated Junction - SDR 11,13.6,17,21	Sewer stream	250mm x 110mm 45° Sewerstream Junction	6 <sup>th</sup> August 2024
SSJ251645	Fabricated Junction - SDR 11,13.6,17,21	Sewer stream	250mm x 160mm 45° Sewerstream Junction	6 <sup>th</sup> August 2024
SSJ311145	Fabricated Junction - SDR 11,13.6,17,21	Sewer stream	315mm x 110mm 45° Sewerstream Junction	6 <sup>th</sup> August 2024
SSJ311645	Fabricated Junction - SDR 11,13.6,17,21	Sewer stream	315mm x 160mm 45° Sewerstream Junction	6 <sup>th</sup> August 2024
SSJC1111	Fabricated Junction - SDR 11,13.6,17,21	Sewer stream	110mm x 110mm Sewerstream Type C Sweep Junction	6 <sup>th</sup> August 2024
SSJC1616	Fabricated Junction - SDR 11,13.6,17,21	Sewer stream	160mm x 160mm Sewerstream Type C Sweep Junction	6 <sup>th</sup> August 2024
SSJC1611	Fabricated Junction - SDR 11,13.6,17,21	Sewer stream	160mm x 110mm Sewerstream Type C Sweep Junction	6 <sup>th</sup> August 2024
SSJC 2516	FABRICATED JUNCTION	Sewer stream	250mm x 160mm Sewerstream Type C Sweep Junction	6 <sup>th</sup> August 2024
SSPF110HS	Fabricated Puddle Flange - SDR11,13.6,17,21	Sewer stream	110mm Sewerstream puddle flange with hydrotite seal	6 <sup>th</sup> August 2024
SSPF160HS	Fabricated Puddle Flange - SDR11,13.6,17,21	Sewer stream	160mm Sewerstream puddle flange with hydrotite seal	6 <sup>th</sup> August 2024
SSPF250HS	Fabricated Puddle Flange - SDR11,13.6,17,21	Sewer stream	250mm Sewerstream puddle flange with hydrotite seal	6 <sup>th</sup> August 2024



# Product Schedule

Model Id	Model Name	Brand Name	Product Description	Endorsement Date
SSPF315HS	Fabricated Puddle Flange - SDR11,13.6,17,21	Sewer stream	315mm Sewerstream puddle flange with hydrotite seal	6 <sup>th</sup> August 2024
SSPF400HS	Fabricated Puddle Flange - SDR11,13.6,17,21	Sewer stream	400mm Sewerstream puddle flange with hydrotite seal	6 <sup>th</sup> August 2024
SSPF450HS	Fabricated Puddle Flange - SDR11,13.6,17,21	Sewer stream	450mm Sewerstream puddle flange with hydrotite seal	6 <sup>th</sup> August 2024
SSPF500HS	Fabricated Puddle Flange - SDR11,13.6,17,21	Sewer stream	500mm Sewerstream puddle flange with hydrotite seal	6 <sup>th</sup> August 2024
SSPF560HS	Fabricated Puddle Flange - SDR11,13.6,17,21	Sewer stream	560mm Sewerstream puddle flange with hydrotite seal	6 <sup>th</sup> August 2024
SSPF630HS	Fabricated Puddle Flange - SDR11,13.6,17,21	Sewer stream	630mm Sewerstream puddle flange with hydrotite seal	6 <sup>th</sup> August 2024
SSPF710HS	Fabricated Puddle Flange - SDR11,13.6,17,21	Sewer stream	710mm Sewerstream puddle flange with hydrotite seal	6 <sup>th</sup> August 2024
SSPF800HS	Fabricated Puddle Flange - SDR11,13.6,17,21	Sewer stream	800mm Sewerstream puddle flange with hydrotite seal	6 <sup>th</sup> August 2024
SSBJ1145	Fabricated Junction - SDR 11,13.6,17,21	Sewer stream	110mm x 45 deg Sewerstream external backdrop junction	6 <sup>th</sup> August 2024
SSBJ1645	Fabricated Junction - SDR 11,13.6,17,21	Sewer stream	160mm x 45 deg Sewerstream external backdrop junction	6 <sup>th</sup> August 2024
SSBJ2545	Fabricated Junction - SDR 11,13.6,17,21	Sewer stream	250mm x 45 deg Sewerstream external backdrop junction	6 <sup>th</sup> August 2024
SSBJ3145	Fabricated Junction - SDR 11,13.6,17,21	Sewer stream	315mm x 45 deg Sewerstream external backdrop junction	6 <sup>th</sup> August 2024
SSBJ1190	Fabricated Junction - SDR 11,13.6,17,21	Sewer stream	110mm x 90 deg Sewerstream external backdrop junction	6 <sup>th</sup> August 2024
SSBJ1690	Fabricated Junction - SDR 11,13.6,17,21	Sewer stream	160mm x 90 deg Sewerstream external backdrop junction	6 <sup>th</sup> August 2024
SSBJ2590	Fabricated Junction - SDR 11,13.6,17,21	Sewer stream	250mm x 90 deg Sewerstream external backdrop junction	6 <sup>th</sup> August 2024
SSBJ3190	Fabricated Junction - SDR 11,13.6,17,21	Sewer stream	315mm x 90 deg Sewerstream external backdrop junction	6 <sup>th</sup> August 2024
SSBB1190	Fabricated Bend - SDR 11,13.6,17,21	Sewer stream	110mm x 90 deg Sewerstream external backdrop bend	6 <sup>th</sup> August 2024
SSBB1690	Fabricated Bend - SDR 11,13.6,17,21	Sewer stream	160mm x 90 deg Sewerstream external backdrop bend	6 <sup>th</sup> August 2024
SSBB2590	Fabricated Bend - SDR 11,13.6,17,21	Sewer stream	250mm x 90 deg Sewerstream external backdrop bend	6 <sup>th</sup> August 2024



# Product Schedule

Model Id	Model Name	Brand Name	Product Description	Endorsement Date
SSBB3190	Fabricated Bend - SDR 11,13.6,17,21	Sewer stream	315mm x 90 deg Sewerstream external backdrop bend	6 <sup>th</sup> August 2024
SSBB1190	Fabricated Bend - SDR 11,13.6,17,21	Sewer stream	110mm x 90 deg Sewerstream internal backdrop bend	6 <sup>th</sup> August 2024
SSBB1690	Fabricated Bend - SDR 11,13.6,17,21	Sewer stream	160mm x 90 deg Sewerstream internal backdrop bend	6 <sup>th</sup> August 2024
SSBB12590	Fabricated Bend - SDR 11,13.6,17,21	Sewer stream	250mm x 90 deg Sewerstream internal backdrop bend	6 <sup>th</sup> August 2024
SSBB13190	Fabricated Bend - SDR 11,13.6,17,21	Sewer stream	315mm x 90 deg Sewerstream internal backdrop bend	6 <sup>th</sup> August 2024
SSBJ1190	Fabricated Junction - SDR 11,13.6,17,21	Sewer stream	110mm x 90 deg Sewerstream internal backdrop junction	6 <sup>th</sup> August 2024
SSBJ1690	Fabricated Junction - SDR 11,13.6,17,21	Sewer stream	160mm x 90 deg Sewerstream internal backdrop junction	6 <sup>th</sup> August 2024
SSBJ12590	Fabricated Junction - SDR 11,13.6,17,21	Sewer stream	250mm x 90 deg Sewerstream internal backdrop junction	6 <sup>th</sup> August 2024
SSBJ13190	Fabricated Junction - SDR 11,13.6,17,21	Sewer stream	315mm x 90 deg Sewerstream internal backdrop junction	6 <sup>th</sup> August 2024
920655	REDUCER	Sewer stream	ECCENTRIC REDUCER 125X110 (WMKT 21999)	6 <sup>th</sup> August 2024
920671	REDUCER	Sewer stream	ECCENTRIC REDUCER 160X110 (WMKT 21999)	6 <sup>th</sup> August 2024
920672	REDUCER	Sewer stream	ECCENTRIC REDUCER 160X125 (WMKT 21999)	6 <sup>th</sup> August 2024
920675	REDUCER	Sewer stream	ECCENTRIC REDUCER LONG 200X110 (WMKT 21999)	6 <sup>th</sup> August 2024
921548	Bend	Sewer stream	88½° bend 110 (WMKT 21999)	6 <sup>th</sup> August 2024
921558	Bend	Sewer stream	88½° bend 125 (WMKT 21999)	6 <sup>th</sup> August 2024
921568	Bend	Sewer stream	88½° bend 160 (WMKT 21999)	6 <sup>th</sup> August 2024
924210	Ring Seal Socket	Sewer stream	Ring Seal Socket 110 (WMKT 21999)	6 <sup>th</sup> August 2024
924211	PUSH-FIT SOCKET	Sewer stream	PUSH-FITT SOCKET 125 (WMKT 21999)	6 <sup>th</sup> August 2024
924213	PUSH-FIT SOCKET	Sewer stream	PUSH-FITT SOCKET 160 (WMKT 21999)	6 <sup>th</sup> August 2024
924110	Expansion Socket	Sewer stream	Expansion Socket 110 (WMKT 21999)	6 <sup>th</sup> August 2024
924111	EXPANSION SOCKET	Sewer stream	EXPANSION SOCKET 125 (WMKT 21999)	6 <sup>th</sup> August 2024
924113	Expansion Socket	Sewer stream	Expansion Socket 160 (WMKT 21999)	6 <sup>th</sup> August 2024
924115S	EXPANSION SOCKET	Sewer stream	EXPANSION SOCKET 200 S12,5 (WMKT 21999)	6 <sup>th</sup> August 2024



# Product Schedule

Model Id	Model Name	Brand Name	Product Description	Endorsement Date
924117	EXPANSION SOCKET	Sewer stream	EXPANSION SOCKET 250 (WMKT 21999)	6 <sup>th</sup> August 2024
924119	EXPANSION SOCKET	Sewer stream	EXPANSION SOCKET 315 (WMKT 21999)	6 <sup>th</sup> August 2024
924630	Weld On. End Cap	Sewer stream	Weld On. End Cap 110 (WMKT 21999)	6 <sup>th</sup> August 2024
924631	Weld On. End Cap	Sewer stream	Weld On. End Cap 125 (WMKT 21999)	6 <sup>th</sup> August 2024
924633	Weld On. End Cap	Sewer stream	Weld On. End Cap 160 (WMKT 21999)	6 <sup>th</sup> August 2024

*End of record*

**Certificate No. AMI 75091**

*The models identified above in the schedule are endorsed for ISO Type 5 application only.*

ApprovalMark

## **APPENDIX C- SUPPLIER CONTACTS**

### **ACU-TECH PTY LTD**

Website: <https://www.acu-tech.com.au/>

#### **Perth**

119 Kelvin Road

Maddington WA 6109

Phone: 08 9238 8000

Email: [sales@acu-tech.com.au](mailto:sales@acu-tech.com.au)

#### **Kalgoorlie**

14 Broadwood Street

West Kalgoorlie WA 6430

Phone: 09 9021 5075

Email: [saleskal@acu-tech.com.au](mailto:saleskal@acu-tech.com.au)

#### **Brisbane**

Unit 5 272 Lavarack Avenue

Pinkenba Qld 4008

Phone: 07 3185 5583

Email: [salesqld@acu-tech.com.au](mailto:salesqld@acu-tech.com.au)

#### **Melbourne**

48 Abbot Road

Hallem Vic 3803

Phone: (03) 9001 0029

Email: [salesvic@acu-tech.com.au](mailto:salesvic@acu-tech.com.au)



**Melbourne Office**

Wurundjeri Country  
Level 8, Suite 8.02  
401 Docklands Drive  
Docklands VIC 3008

**Sydney Office**

Gadigal Country  
Level 6 75 Elizabeth Street  
Sydney NSW 2000  
GPO Box 915  
Sydney NSW 2001

P +61 (0) 3 8605 7600  
email: [info@wsaa.asn.au](mailto:info@wsaa.asn.au)

[www.wsaa.asn.au](http://www.wsaa.asn.au)