


PE PIPING SYSTEMS

EQUIPMENT CATALOGUE





About Us

Acu-Tech® Piping Systems (Acu-Tech) specialises in manufacturing and supplying advanced polyethylene (HDPE) pipe systems tailored for efficient fluid or gas transfer and cable protection. Our state-of-the-art pipe systems are predominantly made from polyethylene (PE) thermoplastics, integrating the latest advancements in pipe technology. These systems are extensively utilised across various industries, including mining, resource extraction, civil engineering, plumbing, rural applications, irrigation, and industrial sectors.

Founded in 2000, Acu-Tech commenced its journey within three shipping containers, evolving into a thriving Australian company that is privately owned and operated. The company's founders and owners actively participate in day-to-day operations, fostering a culture of inspiration, strong leadership, flexible decision-making, and unwavering accountability throughout the organisation.

With our expanding operations nationwide, the dedicated Acu-Tech team is committed to providing the highest level of service and support throughout every stage of your project. Our team members bring decades of collective experience and embrace a positive "can-do" attitude, deeply committed to ensuring the sustained success of your business.

We Care.

Acu-Tech prioritises high quality customer service and support, focusing on always having a positive 'can-do' attitude.

Our Solutions.

With state-of-the-art manufacturing facilities and decades of combined experience, Acu-Tech prioritises continuous innovation and superior products for your HDPE piping needs. Offering turnkey solutions and project management services with a strong emphasis on customer support and success, we ensure tailored solutions that align perfectly with your requirements, whether it's fluid or gas transfer, cable protection, or any other application.

Your Success.

Your Success is our priority. Our durable and cost-effective products, combined with premium client service and support, demonstrate our unwavering commitment to ensuring the long-term success of your business. At Acu-Tech, we are more than just a supplier; we are your partner in success.



OUR VISION

Building Australia's future..

OUR MISSION

Delivering the best pipe solutions for our customers.

OUR VALUES



S

Safety



T

Trustworthy



R

Reliable



I

Innovative



V

Value



E

Energy

Safety

We promote wellbeing first – by following our health and safety practices and speaking up immediately if something seems unsafe.

Trustworthy

We move fast with a high level of trust. We honour our commitments to our customers, team, and community.

Reliable

We have grit, perseverance, and bravery to overcome obstacles, and do what we say we will.

Innovative

We bravely challenge, explore, and implement, effective and improved ways to deliver the best solution.

Value

We are humble, hungry, smart and believe that our team is our greatest asset- every role and every person with great attitude brings value.

Energy

We are hungry, driven by fearless energy 'hustle muscle' to achieve exceptional outcomes by motivating ourselves and those around us to give our best.

Quality Assurance



ISO 9001: DELIVERING EXCELLENCE

At Acu-Tech Piping Systems, we go above and beyond to ensure exceptional quality, epitomised by our ISO 9001 certification - a symbol of excellence in quality assurance.

Our ISO 9001 certification reflects our unwavering commitment to delivering top-tier products and services, while continually refining our processes.

- ✓ **Elevating Product Excellence:** ISO 9001 certification requires rigorous quality control and assurance measures, ensuring that Acu-Tech's piping systems meet or exceed industry standards and customer expectations.
- ✓ **Prioritising Customer Satisfaction:** Adhering to ISO 9001 standards illustrates Acu-Tech's dedication to delivering products that consistently fulfill customer needs and preferences. This results in heightened customer satisfaction and unwavering loyalty.
- ✓ **Streamlining Efficiency and Enhancing Processes:** ISO 9001 encourages organisations to establish efficient processes and continually assess their performance. Acu-Tech utilises this framework to perpetually enhance its operations, leading to increased efficiency and cost-effectiveness.
- ✓ **Mitigating Risk:** The ISO 9001 framework incorporates robust risk management procedures, enabling Acu-Tech to identify and mitigate potential issues early in the production and delivery process. This proactive approach reduces the likelihood of product defects or service disruptions.
- ✓ **Achieving Global Recognition:** ISO 9001 certification holds global recognition, opening doors for Acu-Tech to compete in international markets and expand its customer base.





WHAT SETS US APART?

Consistent reliability: We consistently provide the ideal solution at the most cost-effective value.

Client-focused approach: We actively listen and collaborate closely with our clients to grasp the challenges they face.

Tailored solutions: Leveraging our materials, technology, training, and installation methods, we help determine and implement the right solutions for our clients.

Problem-solving expertise: Leveraging our vast knowledge and experience, we address challenges and deliver effective solutions.

Industry-specific delivery: We excel in providing bespoke pipeline solutions specifically tailored to the distinctive requirements of the industries we serve.

These units leverage the extensive expertise accumulated by HÜRNER over several decades. They embody HÜRNER's signature traits: lightweight design, compact dimensions, and outstanding performance. Additionally, they are equipped with GPS technology for effortless geo-coordinate recording at the push of a button.

Whether it involves jointing in safety-sensitive zones within gas networks, including precise geographic data capture, working with components of varying diameters (e.g., geothermal or sanitary fittings with small diameters or wastewater applications with larger diameters), these welders consistently demonstrate their unwavering reliability. This reliability is built upon more than 35 years of dedicated development and manufacturing experience.

The HST 300 Print+ 2.0 boasts an exceptionally user-friendly data transfer menu that facilitates the retrieval of carefully curated welding and traceability reports. These reports can be obtained in either abstract or extended PDF formats, printed as labels using the optional label tag printer, or sent to a PC in the DataWork format.

HST-S-160 Electrofusion Drainage Welder

The HST-S-160 electrofusion drainage welder offers easy and convenient welding of PE drainage fittings sized 40- 160mm. With its compact dimensions, weight of approximately 1.4kgs and its long welding cables, the welder offers an enormous working radius

| | |
|--------------|----------|
| PRODUCT CODE | 211-0160 |
|--------------|----------|



HST-S-315 Electrofusion Drainage Welder

This HST-S-315 electrofusion drainage welder offers easy and convenient welding of PE drainage fittings 40 to 315mm in wastewater and drainage applications. It comes in a sturdy plastic transport case with connecting adaptors; A00, A01, A02, A04 & A0P.

| | |
|--------------|----------|
| PRODUCT CODE | 211-0315 |
|--------------|----------|



HST 300 Smart Electrofusion Welder

- Operating range up to 160mm, 8.1kg in weight
- Professional welding control, 15amp, single phase power
- Data traceability management
- Automatic data logging
- 500 report memory & USB interface for data transfer
- Barcode scanner for data input
- Quality carry bag with shoulder strap

PRODUCT CODE 201-0160



HST 300 Print 450 Electrofusion Welder

- Operating range up to 450mm, 16kg in weight
- Professional welding control, 15amp, single phase power
- Data traceability management
- Automatic data logging
- 5,000 report memory
- Data input by bar-code scanner or manual input
- Bluetooth connectivity to view or transfer weld data via the WeldTrace app

PRODUCT CODE 201-0450



HST 300 Print+ 2.0 Electrofusion Welder w/GPS

- Operating range up to 1200mm, 16kg in weight
- Professional welding control, 15amp, single phase power
- Data traceability management to ISO 12176-2/4
- GPS recording of time and geo-coordinates
- Automatic data logging
- 10,000 report memory
- Data input by barcode scanner, Fusamatic autoID or manual input
- Bluetooth connectivity to view or transfer weld data via the WeldTrace app
- USB interface or Bluetooth for data transfer
- Dedicated print menu to transfer to (optional) label printer
- Welder ID management configuration
- Dedicated memory back-up routine
- Large, easy read display with adjustable contrast and a wide viewing angle

PRODUCT CODE 201-1300



PIPE SCRAPERS

PREPMASTER MULTI SCRAPERS

PrepMaster multi scrapers is a manually operated mechanical rotary scraping tool for removal of the outer surface of PE pipe. It incorporates a hardened blade and gives control over the cut. Available for pipe sizes between 63mm and 710mm.



PrepMaster MULTI 63-315mm

| PRODUCT CODE | DESCRIPTION |
|--------------|------------------------------------|
| 221-1315 | PrepMaster MULTI Scraper 63-315mm |
| 221-1400 | PrepMaster MULTI Scraper 90-400mm |
| 221-1500 | PrepMaster MULTI Scraper 110-500mm |
| 221-1710 | PrepMaster MULTI Scraper 250-710mm |
| 221-1001 | PrepMaster MULTI Scraper Blade |



Easy adjustment for differing pipe walls



Robust bronze knobs for "fast traverse" & blade positioning

MONO PIPE SCRAPER

Manually operated rotary scraping tool for removal of the outer surface of the PE pipe prior to electrofusion. One tool is available per pipe size and wall thickness, ranging from 20mm to 63mm.

| PRODUCT CODE | DESCRIPTION |
|--------------|-------------------------|
| 221-2020 | MONO Pipe Scraper- 20mm |
| 221-2025 | MONO Pipe Scraper- 25mm |
| 221-2032 | MONO Pipe Scraper- 32mm |
| 221-2040 | MONO Pipe Scraper- 40mm |
| 221-2050 | MONO Pipe Scraper- 50mm |
| 221-2063 | MONO Pipe Scraper- 63mm |
| 221-2001 | MONO Pipe Scraper Blade |

"One Touch" Blade Lock Off Mechanism



Removal Mandrel for alternative SDR's

RTC MECHANICAL SCRAPER

The RTC scraper offers some key features that make it unique. One of its primary capabilities is its ability to maintain a constant thickness of the pipe's chips, even when the pipe is not perfectly shaped. Additionally, it can adapt the length of the scraped surface based on the depth of the coupler. To achieve this, the primary chuck of the RTC scraper is equipped with four extendable arms that securely grip the inside diameter of the pipe.

| PRODUCT CODE | DESCRIPTION |
|--------------|-----------------------------------|
| 221-5160 | RTC Mechanical Scraper- 50-160mm |
| 221-5315 | RTC Mechanical Scraper- 75-315mm |
| 221-5710 | RTC Mechanical Scraper- 355-710mm |
| 221-5001 | RTC/PS Scraper Blade |



PS ROTARY PIPE SCRAPER

The PS 180 and PS 400 are rotary scrapers which are designed essential to prepare PE pipes and fittings before electrofusion welding.

The tools have an adjustable chuck that covers all pipe sizes within the working range. The PS series guarantees a constant and regular removal of the shavings.

| PRODUCT CODE | DESCRIPTION |
|--------------|-----------------------------------|
| 221-6180 | PS Rotary Pipe Scraper-75-180mm |
| 221-6400 | PS Rotary Pipe Scraper- 160-400mm |
| 221-5001 | RTC/PS Scraper Blade |



HAND SCRAPER

Robust and easy to use hand tools for manual scraping of PE surfaces.

| PRODUCT CODE | DESCRIPTION |
|--------------|--|
| 221-8064 | Hand Scraper- 64mm |
| 947780 | Replacement Blade for Hand Scraper- 64mm |



PIPE SCRAPERS

TURBO PIPE SCRAPER

The turbo pipe scrapers are designed to be used with a drill in the attachment chuck and can work in tight or cramped spaces. They significantly decrease the amount of time needed for work while maintaining effective scraping capabilities.

| PRODUCT CODE | DESCRIPTION |
|--------------|----------------------------------|
| 221-4016 | Turbo Pipe Scraper- 16mm |
| 221-4020 | Turbo Pipe Scraper- 20mm |
| 221-4025 | Turbo Pipe Scraper- 25mm |
| 221-4032 | Turbo Pipe Scraper- 32mm |
| 221-4040 | Turbo Pipe Scraper- 40mm |
| 221-4050 | Turbo Pipe Scraper- 50mm |
| 221-4063 | Turbo Pipe Scraper- 63mm |
| 221-4001 | Turbo Pipe Scraper Blade |
| 221-4002 | Turbo Pipe Scraper Kit Bag |
| 221-4003 | Turbo Pipe Scraper Aluminum Case |



ROTARY SADDLE SCRAPER

The manually operated saddle scraper is purpose-built for scraping pipes before installing electrofusion saddles and tapping bands. It offers great versatility as it can be used anywhere along the length of the pipe, eliminating the need for access to a pipe end. One tool is available for each pipe size, covering a range from 40 mm to 315 mm outside diameter.

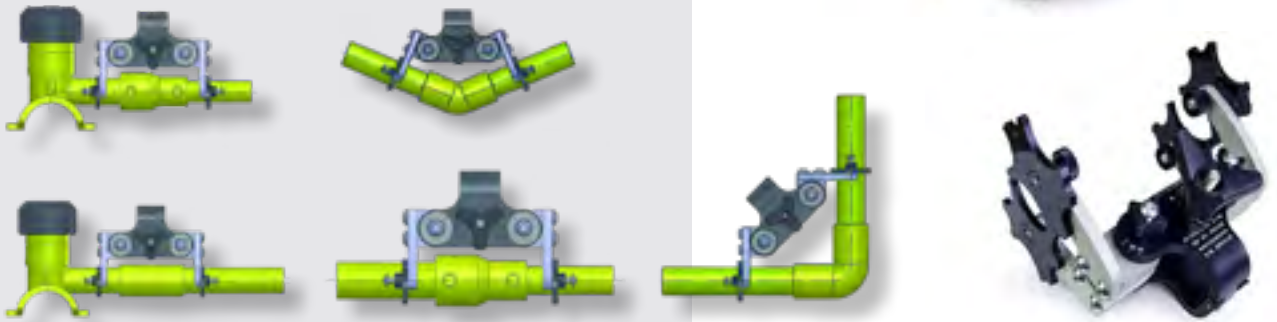
| PRODUCT CODE | DESCRIPTION |
|--------------|------------------------------|
| 221-3040 | Rotary Saddle Scraper- 40mm |
| 221-3050 | Rotary Saddle Scraper- 50mm |
| 221-3063 | Rotary Saddle Scraper- 63mm |
| 221-3075 | Rotary Saddle Scraper- 75mm |
| 221-3090 | Rotary Saddle Scraper- 90mm |
| 221-3110 | Rotary Saddle Scraper- 110mm |
| 221-3125 | Rotary Saddle Scraper- 125mm |
| 221-3140 | Rotary Saddle Scraper- 140mm |
| 221-3160 | Rotary Saddle Scraper- 160mm |
| 221-3180 | Rotary Saddle Scraper- 180mm |
| 221-3200 | Rotary Saddle Scraper- 200mm |
| 221-3225 | Rotary Saddle Scraper- 225mm |
| 221-3250 | Rotary Saddle Scraper- 250mm |
| 221-3280 | Rotary Saddle Scraper- 280mm |
| 221-3315 | Rotary Saddle Scraper- 315mm |
| 221-3001 | Rotary Saddle Scraper Blade |



UNI-CLAMP- RESTRAINING & ALIGNMENT CLAMPS

The Uniclamp is a compact yet robust clamp designed for multiple applications, including straight, reducing, and elbow electrofusion fittings. Its prevents any unwanted movement during the welding process, thereby reducing the risk of weld failure.

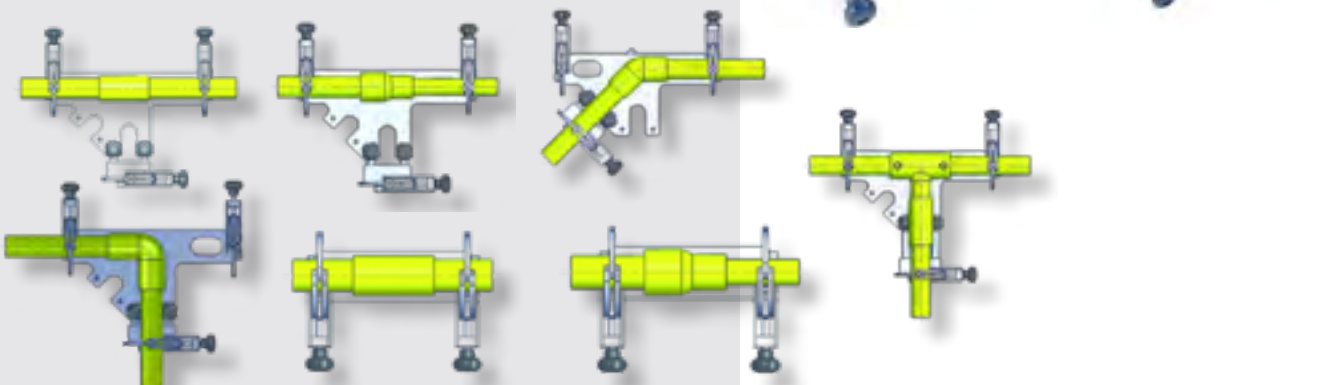
| PRODUCT CODE | DESCRIPTION |
|--------------|-------------------|
| 231-0010 | Uni-Clamp 16-32mm |
| 231-0020 | Uni-Clamp 20-40mm |
| 231-0030 | Uni-Clamp 16-63mm |



EFAC 63 Alignment Clamp

This alignment clamp ensures quick and easy clamping of any size pipe between 20-63mm with no adjustment or loose pieces. The standard version suits straight and reducing fittings, whilst the 45/90° version also facilitates clamping of elbows and tees.

| PRODUCT CODE | DESCRIPTION |
|--------------|----------------------------------|
| 231-1010 | EFAC 63mm Alignment Clamp |
| 231-1020 | EFAC 63mm 45/90° Alignment Clamp |

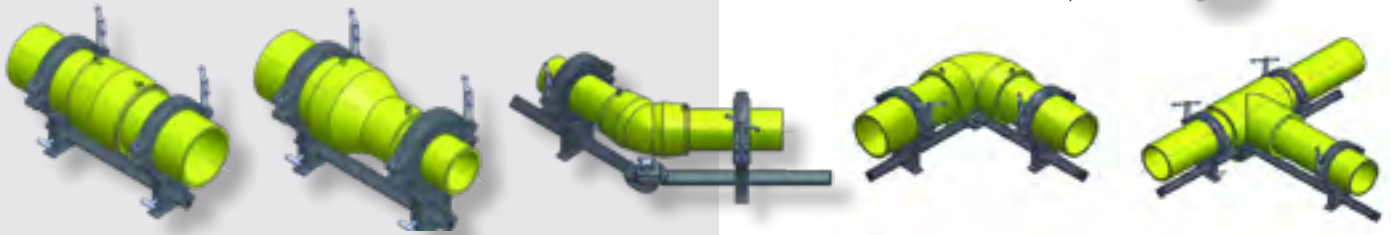


ALIGNMENT CLAMPS

EFRAC 180 DELUX RESTRAINING & ALIGNMENT CLAMP KIT

The Delux Kit caters for straight, reducing and elbow electrofusion fittings. It comes in a tough carry bag and with liners to suit pipe sizes of 63, 90, 125 and 180mm. This clamp removes the need for a separate re-rounding tool as the clamp design will re-round the pipe. The Tee Adaptor can be seamlessly connected to the delux kit. A dedicated carry bag for the Tee Adaptor and extral liners are also available for purchase.

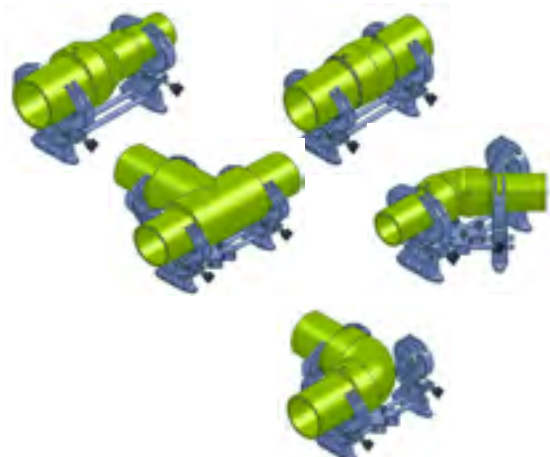
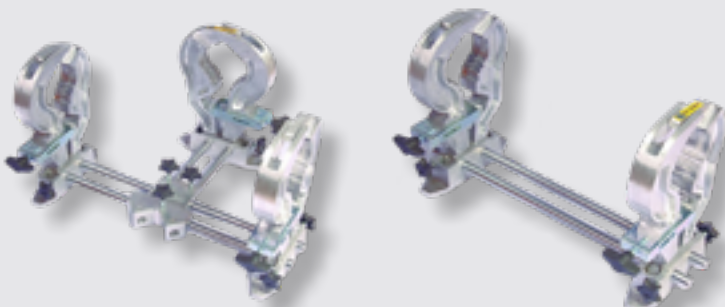
| PRODUCT CODE | DESCRIPTION |
|--------------|--|
| 231-0120 | EFRAC 180 Delux Kit Complete with Knuckled Bar, Standard Liners and Bag. |
| 231-0130 | EFRAC 180 Tee Adaptor Kit |
| 231-0131 | Carry Bag for EFRAC 180 Tee Adaptor |
| 231-0151 | EFRAC Liner - 63mm |
| 231-0152 | EFRAC Liner - 75mm |
| 231-0153 | EFRAC Liner - 90mm |
| 231-0154 | EFRAC Liner - 110mm |
| 231-0155 | EFRAC Liner - 125mm |
| 231-0156 | EFRAC Liner - 140mm |
| 231-0157 | EFRAC Liner - 160mm |



EFAC 180 Alignment Clamp

The EFAC 180 alignment clamp is known as the “original” no-liner clamp, offering a unique design. Its base incorporates a gear mechanism that enables fast and effortless clamping of pipes ranging from 63mm to 180mm in diameter without the need for loose components. The standard version is suitable for straight and reducing electrofusion fittings. The additional 45/90° adaptor kit facilitates for the clamping of elbows and tees as well.

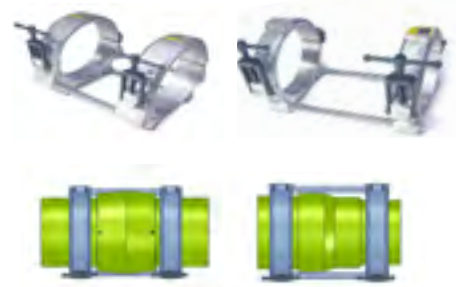
| PRODUCT CODE | DESCRIPTION |
|--------------|--------------------------|
| 231-0110 | EFAC 100 Standard Kit |
| 231-0130 | EFAC 100 Tee Adapter Kit |



ALIGNMENT & RESTRAINING CLAMPS- 250 & 315MM

These clamps are built to be sturdy and durable with liners that are ideal for securely clamping both straight and reducing electrofusion fittings. These clamps can act as re-rounding tools, making them versatile and practical for various applications.

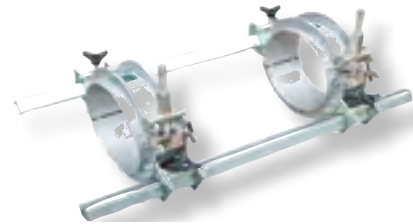
| PRODUCT CODE | DESCRIPTION |
|--------------|----------------------------------|
| 231-0230 | EFRAC 250mm Alignment Clamp |
| 231-0231 | EFRAC Liner 250/180 (4 Required) |
| 231-0250 | EFRAC 315mm Alignment Clamp |
| 231-0251 | EFRAC Liner 315/250 (4 Required) |



AlignMaster Positioning Clamps- 315, 355 & 400mm

These tools are essential for accurately positioning and restraining pipes during the electrofusion jointing process. Reducing liners are available to suit all pipe sizes between 280-400mm.

| PRODUCT CODE | DESCRIPTION |
|--------------|--------------------------------|
| 231-0310 | Positioning Clamp- 315mm |
| 231-0320 | Positioning Clamp- 355mm |
| 231-0330 | Positioning Clamp- 400mm |
| 231-0311 | Reducing Liner- 315/280 (2Pcs) |
| 231-0331 | Reducing Liner- 400/355 (2Pcs) |
| 231-0332 | Reducing Liner- 400/315 (2Pcs) |



AlignMaster Hydraulic Positioning Kits- 400, 500, 630 & 710mm

These tools serve the purposes of re-rounding, positioning, and securely restraining for various tasks involving large diameter pipes and couplers during the electrofusion jointing process. The hydraulic cylinders greatly aid in clamping large diameter pipes effectively. Reducing liners are available accommodate all pipe sizes ranging from 315mm to 710mm, ensuring versatility and a precise fit for various applications.

| PRODUCT CODE | DESCRIPTION |
|--------------|----------------------------------|
| 231-0410 | Hydraulic Positioning Kit- 400mm |
| 231-0411 | Reducing Liners- 400/355 |
| 231-0412 | Reducing Liners- 400/315 |
| 231-0420 | Hydraulic Positioning Kit-0500mm |
| 231-0421 | Reducing Liners- 500/450 |
| 231-0422 | Reducing Liners- 500/400 |
| 231-0430 | Hydraulic Positioning Kit- 630mm |
| 231-0431 | Reducing Liners- 630/560 |
| 231-0432 | Reducing Liners- 630/500 |
| 231-0440 | Hydraulic Positioning Kit- 710mm |
| 231-0441 | Reducing Liners- 710/630 |



ALIGNMENT CLAMPS

Strap Clamp 200

These alignment clamps are designed for quick and easy setup and are suitable for pipe sizes ranging from 40mm to 200mm. You can choose between single clamps, where you use one clamp on each side of the fitting, or double clamps with 2 clamps each side of fitting when used with the below accessories. Additionally, the angle maker bar serves a versatile purpose, as it can be employed with straight couplers as well as 22.5, 45, and 90-degree elbows, making it a flexible tool for different joint configurations

| PRODUCT CODE | DESCRIPTION |
|--------------|--|
| 231-2020 | Strap Clamp 200, Single Clamps, Angled Maker Bar |
| 231-2025 | Strap Clamp 200, Double Clamps, Angle Maker Bar |



Strap Clamp 500

These lightweight alignment clamps are designed for quick and easy setup and are suitable for larger pipe sizes ranging from 160mm to 500mm. You have the option to choose between single clamps, where one clamp is used on each side of the fitting, or double clamps with 2 clamps each side of the fitting when used with the below accessories. The straight bar is specifically designed for couplers and is ideal for reducing fittings. Additionally, the angle maker bar is a versatile tool that can be used with straight couplers as well as 22.5, 45, and 90-degree elbows, making it suitable for various joint configurations.

| PRODUCT CODE | DESCRIPTION |
|--------------|---|
| 231-2030 | Strap Clamp 500, Single Clamp, Straight Bar |
| 231-2035 | Strap Clamp 500, Double Clamps, Straight Bar |
| 231-2040 | Strap Clamp 500, Single Clamps, Angle Maker Bar |
| 231-4045 | Strap Clamp 500, Double Clamps, Angle Maker Bar |



Accessories: Strap Clamp 200 & Strap Clamp 500

There are extra accessories available to facilitate the clamping of tee joints.

| PRODUCT CODE | DESCRIPTION |
|--------------|------------------------------------|
| 231-2050 | Strap clamp T-adaptor bar |
| 231-2051 | Additional strap clamp 200 V-Block |
| 231-2052 | Additional strap clamp 500 V-Block |

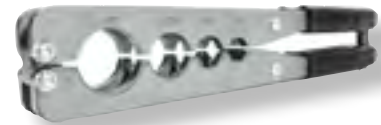


MANUAL RE-ROUNDING TOOLS

Acu-Tech offers a comprehensive range of Re-Rounding tools and clamps for PE pipes with diameters between 16mm to 710mm. These clamps are designed for use on PE pipes where ovality is present during the electrofusion process.

Multi-Size Re-Rounding Tool

| PRODUCT CODE | DESCRIPTION |
|--------------|--|
| 241-0016 | Multi-Size Re-Rounding Tool, 16, 20, 25 & 32mm |



Nutcracker Re-Rounding Tools

| PRODUCT CODE | DESCRIPTION |
|--------------|-----------------------------------|
| 241-0020 | Nutcracker Re-Rounding Tool- 20mm |
| 241-0025 | Nutcracker Re-Rounding Tool- 25mm |
| 241-0032 | Nutcracker Re-Rounding Tool- 32mm |
| 241-0040 | Nutcracker Re-Rounding Tool- 40mm |
| 241-0050 | Nutcracker Re-Rounding Tool- 50mm |



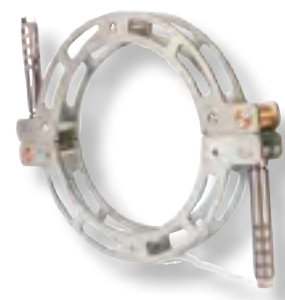
Hinged Collar Re-Rounding Tools

| PRODUCT CODE | DESCRIPTION |
|--------------|---------------------------------------|
| 241-1063 | Hinged Collar Re-Rounding Tool- 63mm |
| 241-1075 | Hinged Collar Re-Rounding Tool- 75mm |
| 241-1090 | Hinged Collar Re-Rounding Tool- 90mm |
| 241-1110 | Hinged Collar Re-Rounding Tool- 110mm |
| 241-1125 | Hinged Collar Re-Rounding Tool- 125mm |
| 241-1140 | Hinged Collar Re-Rounding Tool- 140mm |
| 241-1160 | Hinged Collar Re-Rounding Tool- 160mm |
| 241-1180 | Hinged Collar Re-Rounding Tool- 180mm |



Split Collar Re-Rounding Tools

| PRODUCT CODE | DESCRIPTION |
|--------------|---------------------------------------|
| 241-1200 | Split Collar Re-Rounding Clamp- 200mm |
| 241-1225 | Split Collar Re-Rounding Clamp- 225mm |
| 241-1250 | Split Collar Re-Rounding Clamp- 250mm |



RE-ROUNDING TOOLS

Segmented Collar Re-Rounding Clamp

The 2 Segment Re-Rounding Clamp is a strong and durable mechanical tool for removing ovality in HDPE pipes before the welding process. With a welded steel construction for larger pipe diameters, the tool is easy to install and remove.

Features

- Pipe range 280-400mm \varnothing
- Comes with ratchet spanner
- 100mm contact area for full face re-rounding
- Robust design
- Easy to install

| PRODUCT CODE | DESCRIPTION |
|--------------|--------------------------|
| 241-1315 | Re-Rounding Clamp- 315mm |
| 241-1355 | Re-Rounding Clamp- 355mm |
| 241-1400 | Re-Rounding Clamp- 400mm |
| 241-0311 | Reducing Liner- 315/280 |
| 241-0331 | Reducing Liner- 400/355 |
| 241-0332 | Reducing Liner- 400/315 |



Hydraulic Re-Rounding Tools

The hydraulic re-rounding tool is a robust and durable hydraulic-powered device designed for the removal of ovality in the pipe diameter during the electrofusion process. This clamp includes a manual hydraulic pump for operation, and its size can be adjusted as needed by adding reducing liners, providing flexibility and adaptability for various pipe sizes and conditions.

| PRODUCT CODE | DESCRIPTION |
|--------------|------------------------------------|
| 241-2410 | Hydraulic Re-Rounding Clamp- 400mm |
| 241-2420 | Hydraulic Re-Rounding Clamp- 500mm |
| 241-2430 | Hydraulic Re-Rounding Clamp- 630mm |
| 241-2440 | Hydraulic Re-Rounding Clamp- 710mm |
| 231-0412 | Reducing Liners- 400/315 |
| 231-0411 | Reducing Liners- 400/355 |
| 231-0421 | Reducing Liners- 500/450 |
| 231-0422 | Reducing Liners- 500/400 |
| 231-0431 | Reducing Liners- 630/560 |
| 231-0432 | Reducing Liners- 630/500 |
| 231-0441 | Reducing Liners- 710/630 |



Squeeze off Re-Rounding Tools

The squeeze off re-rounding tools are created to assist in the re-rounding process after a squeeze off tool has been used on the pipe. The standard range is designed for specific diameters and includes sizes from 63mm to 250mm. However, custom sizes can be manufactured to order

| PRODUCT CODE | DESCRIPTION |
|--------------|--|
| 241-3063 | Post Squeeze Off Re-Rounding Tool- 63mm |
| 241-3075 | Post Squeeze Off Re-Rounding Tool- 75mm |
| 241-30920 | Post Squeeze Off Re-Rounding Tool- 90mm |
| 241-3110 | Post Squeeze Off Re-Rounding Tool- 110mm |
| 241-3125 | Post Squeeze Off Re-Rounding Tool- 125mm |
| 241-3140 | Post Squeeze Off Re-Rounding Tool- 140mm |
| 241-3160 | Post Squeeze Off Re-Rounding Tool- 160mm |
| 241-3180 | Post Squeeze Off Re-Rounding Tool- 180mm |
| 241-3200 | Post Squeeze Off Re-Rounding Tool- 200mm |
| 241-3225 | Post Squeeze Off Re-Rounding Tool- 225mm |
| 241-3250 | Post Squeeze Off Re-Rounding Tool- 250mm |



*Squeeze-off
Re-Rounding Tools*

Universal Squeeze Off Re-Rounding Tools

These squeeze re-rounding tools can be provided with liners that extend their versatility and allows the tools to effectively re-round pipes of varying sizes and different applications

| PRODUCT CODE | DESCRIPTION |
|--------------|--|
| 241-3510 | Uni Post Squeeze Off Re-Rounding Tool- 63, 75, 90mm |
| 241-3520 | Uni Post Squeeze Off Re-Rounding Tool- 110, 120, 140, 160, 180mm |
| 241-3530 | Uni Post Squeeze Off Re-Rounding Tool- 180, 200, 225, 250mm |



*Universal Squeeze off
Re-Rounding Tools*

SQUEEZE OFF TOOLS

Mini Squeeze Off Tool

The Mini Squeeze Off Tool serves the purpose of limiting the flow in PE (Polyethylene) pipes. By simply turning the handle clockwise manually, this tool provides a convenient and straightforward way to manage the flow within the pipe.



| PRODUCT CODE | DESCRIPTION |
|--------------|-------------------------------------|
| 251-1010 | Mini Squeeze Off Tool- 16mm to 32mm |

Heavy Duty Squeeze Off Tools

The heavy-duty squeeze-off tools are designed for the control of flow or temporary closure of pipes within the size range of 20mm to 125mm. These tools can accommodate various pipe diameters by using the appropriate pipe stop, ensuring that the squeeze gap is adjusted to the optimum level for the task at hand.

| PRODUCT CODE | DESCRIPTION |
|--------------|--|
| 251-1030 | Squeeze Off Tool- 20mm-63mm SDR11 |
| 251-1031 | Pipe Stop Pair- 20-63mm SDR11 |
| 251-1032 | Pipe Stop Pair- 20-63mm SDR17 |
| 251-1040 | Squeeze Off Tool- 63-125mm SDR11 & SDR17 |
| 251-1041 | Squeeze Off Tool- 63-125mm SDR21 |
| 251-1042 | Pipe Stop Pair, 63-125mm SDR11 & SDR17 |
| 251-1043 | Pipe Stop Pair, 63-125mm SDR21 |



Hydraulic Squeeze Off Tool- 180 & 200mm

The 180 and 200 hydraulic squeeze off tools have CNC machined stops and an integral hydraulic jack enabling a maximum squeeze force of 15 tonnes. The units are fitted with safety check screws to prevent accidental release and also incorporate a jack spring return mechanism. 'Pipe Stops' are used on units for each diameter/SDR combination to ensure the optimum squeeze gap.

| PRODUCT CODE | DESCRIPTION |
|--------------|------------------------------|
| 251-1050 | Squeeze Off Tool- 63mm*180mm |
| 251-1060 | Squeeze Off Tool- 63mm-200mm |



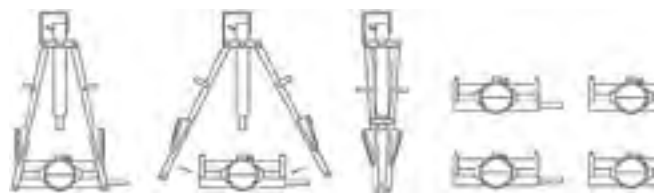
Hydraulic Squeeze Off Unit- 250mm

This squeeze-off unit features a lightweight, fold-able A-Frame design for easy portability. The lower beam is fitted with pipe stops to ensure the pipe is not over squeezed.. After the pipe squeeze is completed, the beams can be securely locked, and the A-Frame can be detached for use with another set of beams. The kit comes with four beam sets, enabling multiple squeeze-offs to be performed using a single A-Frame.

Kit includes:

- 1x A Frame
- 4x Top Beam Assemblies
- 4x Bottom Beam Assemblies
- 1x Power Unit or (hand pump not shown)

| PRODUCT CODE | DESCRIPTION |
|--------------|-----------------------------------|
| 251-1070 | Manual Squeeze Off Unit- 250mm |
| 251-1075 | Hydraulic Squeeze Off Unit- 250mm |



Hydraulic Squeeze Off Unit- 400mm & 500mm

These squeeze-off units are equipped with two hydraulic rams that deliver high squeezing pressure, making them ideal for large diameter pipes. After the pipe squeezing operation is completed, the beams can be securely locked, allowing the two hydraulic cylinders to be detached and utilized with another set of beams. The lower beam is fitted with pipe stops to prevent excessive squeezing of the pipe. The kit includes four beam sets, enabling multiple squeeze-offs to be carried out using just one pair of hydraulic rams, enhancing efficiency and flexibility.

Kit includes:

- 2x Hydraulic Cylinders
- 4x Top Beam Assemblies
- 4x Bottom Beam Assemblies
- 1x Power Unit

| PRODUCT CODE | DESCRIPTION |
|--------------|-----------------------------------|
| 251-1080 | Hydraulic Squeeze Off Unit- 400mm |
| 251-1090 | Hydraulic Squeeze Off Unit- 500mm |



TOP LOADING SADDLE CLAMPS & PIPE CUTTERS

Strap Top Loading Saddle Clamps

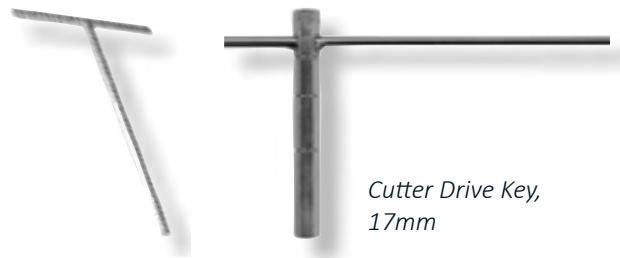
The Strap Top Loading Clamp locates in the 12mm Hexagonal drive on the saddle and is especially useful where trench space is tight. For all pipe sizes up to 500mm diameter.

| PRODUCT CODE | DESCRIPTION |
|--------------|--------------------------------------|
| 247-1040 | Strap Top Loading Clamp- Up to 500mm |
| 247-1001 | Branch Saddle Adapter- 63, 90mm |
| 247-1002 | Branch Saddle Adapter- 63, 90, 125mm |

Cutter Drive Keys

Cutter drive keys for electrofusion tapping saddles.

| PRODUCT CODE | DESCRIPTION |
|--------------|------------------------|
| 247-2010 | Cutter Drive Key- 12mm |
| 247-2020 | Cutter Drive Key- 17mm |



Cutter Drive Key,
12mm

Cutter Drive Key,
17mm

Secateur Pipe Cutters

Ratchet action secateurs for cutting HDPE pipe between 16mm to 75mm. This efficiently cuts your pipe giving a neat and clean finish.

| PRODUCT CODE | DESCRIPTION |
|--------------|-----------------------------------|
| 261-1020 | Secateur pipe Cutters- 16mm- 42mm |
| 261-1040 | Secateur pipe Cutters- 16mm- 63mm |



Rotary Pipe Cutters

These plastic pipe cutters facilitate precision cutting of all thick wall HDPE pipe with spring loaded action for fast adjustment.

| PRODUCT CODE | DESCRIPTION |
|--------------|------------------------------|
| 261-2010 | Rotary Pipe Cutter 16-67mm |
| 261-2020 | Rotary Pipe Cutter, 50-127mm |
| 261-2021 | Blade- RPC 50-127mm |



WELDMASTER Butt Fusion Machines

Hy-Ram has designed and manufactured high quality Butt Fusion Equipment since the early 1980's. The latest WeldMaster range takes the Fully Automatic machine to the next level in terms of control, quality, connectivity, usability and smart technological features.

The WeldMaster have a practical mechanical design and technologically advanced software features, all accessible from an intuitive new full-colour 7" TFT touchscreen interface. The machines offer a simplistic operation whilst the functionality of the software automatically enables and records a host of smart features and information.

Key Features:

- Integrated RFID reader – monitoring training status and Operator ID
- Touchscreen – 7" TFT Intuitive User Interface
- Menu driven data entry plus touchscreen 'QWERTY' Keypad
- Bluetooth Connectivity for smartphone apps and BDI tool
- USB Connectivity
- Embedded GPS for precise weld location stored with each joint record
- 'Scroll-back' On-screen review of all joint data
- Simple Text and Animated Graphic representation of 'Next-step' in welding cycle
- Internal Memory for in excess of 1 million Joint Records
- Option of bespoke Joint Data Analysis Software
- Programmed with UK and International Welding Standards
- Programmed for 3 different types of Plastic Materials
- Automatic 'Dummy' Weld Cycle when welding to the WIS standard
- Early Warning Error Messages
- On board Diagnostics software – Graphically driven for simplicity
- Customisable for Owner's Logo on 'start-up' screen
- Customisable for welding of non-standard or 'special' pipe
- Option for bar-code Reader
- Options for different International languages
- Configurable for 'Pupping' / Welding of PE Fittings



| PRODUCT CODE | DESCRIPTION |
|--------------|---------------------------|
| 130-0250 | WeldMaster 250, 63-250mm |
| 130-0315 | WeldMaster 315, 110-315mm |
| 130-0400 | WeldMaster 400, 160-400mm |

UFUSE BUTT WELDERS

UFUSE 160 Butt Welder

The Australian designed UFUSE 160 electric hydraulic butt welder is capable of welding HDPE and PP pipe with a size range from 40mm to 160mm (outside diameter).

Designed to weld HDPE pipe according to DVS 2207-1, ISO 21307 and POP003 high and low-pressure specifications.

This butt welder is wired ready to accept a data logger.

Key Features:

- Extractable heating plate and milling cutter
- 4 jaw main carriage
- Electro-hydraulic gear-case
- Heating plate and milling cutter support
- Tool kit
- Stub end device (spider)
- Set of inserts: 40mm, 50mm, 63mm, 75mm, 90mm, 110mm, 125mm, 140mm
- Main clamp OD: 160mm



| CODE | DESCRIPTION |
|----------|-------------------------------------|
| 120-0016 | UFUSE SMA Butt Fusion Welder- 160mm |
| 120-0017 | UFUSE Stub Holder Device- 160mm |

UFUSE 250 Butt Welder

The Australian designed UFUSE 250 electric hydraulic butt welder is capable of welding HDPE and PP pipe with a size range from 63mm to 250mm (outside diameter).

Designed to weld HDPE pipe according to DVS 2207-1, ISO 21307 and POP003 high and low-pressure specifications and is wired and ready to accept a data logger.

Key Features:

- Extractable heating plate and milling cutter
- 4 jaw main carriage
- Electro-hydraulic gear-case
- Heating plate and milling cutter support
- Tool kit
- Stub end device (spider)
- Set of inserts: 63mm, 75mm, 90mm, 110mm, 125mm, 140mm, 160mm, 180mm, 200mm, 225mm
- Main clamp OD: 250mm



| CODE | DESCRIPTION |
|-------------|-------------------------------------|
| 120-0025-V2 | UFUSE SMA Butt Fusion Welder- 250mm |
| 120-0026 | UFUSE Stub Holder Device- 250mm |

UFUSE 355 Butt Welder

The Australian designed UFUSE 355 electric hydraulic butt welder is capable of welding HDPE and PP pipe with a size range from 90mm to 355mm (outside diameter).

Designed to weld HDPE pipe according to DVS 2207-1, ISO 21307 and POP003 high and low-pressure specifications.

This butt welder is wired ready to accept a data logger.

Key Features:

- Extractable heating plate and milling cutter
- 4 jaw main carriage
- Electro-hydraulic gear-case
- Heating plate and milling cutter support
- Tool kit
- Stub end device (spider)
- Set of inserts: 90mm, 110mm, 125mm, 140mm, 160mm, 180mm, 200mm, 225mm, 250mm, 280mm, 315mm
- Main clamp OD: 355mm



| PRODUCT CODE | DESCRIPTION |
|--------------|-------------------------------------|
| 120-0035-V2 | UFUSE SMA Butt Fusion Welder- 355mm |
| 120-0036 | UFUSE Stub Holder Device- 355mm |

UFUSE 450 Butt Welder

The Australian designed UFUSE 450 electric hydraulic butt welder is capable of welding HDPE and PP pipe with a size range from 200mm to 450mm (outside diameter).

Designed to weld HDPE pipe according to DVS 2207-1, ISO 21307 and POP003 high and low-pressure specifications.

This butt welder is wired ready to accept a data logger.

Key Features:

- Extractable heating plate and milling cutter
- 4 jaw main carriage
- Electro-hydraulic gear case
- Heating plate and milling cutter support
- Tool kit
- Stub end device (spider)
- Set of inserts OD: 200mm, 225mm, 250mm, 280mm, 315mm, 400mm.
- Jlb crane to assist with milling cutter and heater plate.
- Main clamp OD: 450mm



| PRODUCT CODE | DESCRIPTION |
|--------------|-------------------------------------|
| 120-0045-V1 | UFUSE SMA Butt Fusion Welder- 450mm |
| 120-0046 | UFUSE Stub Holder Device- 450mm |

UFUSE BUTT WELDERS

UFUSE 630 Butt Welder

The Australian designed UFUSE 630 electric hydraulic butt welder is capable of welding HDPE and PP pipe with a size range from 315mm to 630mm (outside diameter).

Designed to weld HDPE pipe according to DVS 2207-1, ISO 21307 and POP003 high and low pressure specifications. This butt welder is wired ready to accept a data logger.

Key Features:

- Extractable heating plate and milling cutter
- 4 jaw main carriage
- Electro-hydraulic gearcase
- Heating plate and milling cutter support
- Tool kit
- Stub end device (spider)
- Set of inserts: 40mm, 50mm, 63mm, 75mm, 90mm, 110mm, 125mm, 140mm
- Main clamp OD: 160mm

| CODE | DESCRIPTION |
|----------|-------------------------------------|
| 120-0063 | UFUSE SMA Butt Fusion Welder- 630mm |
| 120-0064 | UFUSE Stub Holder Device- 630mm |

UFUSE 1000 Butt Welder

The Ufuse 1000 butt fusion welding machine is perfect for butt-welding polyethylene pipes with an outside diameter between 630 mm and 1000 mm diameter.

Key Features:

- Extractable heating plate and milling cutter
- 4 jaw main carriage
- Electro-hydraulic gear-case
- Heating plate and milling cutter support
- Tool kit
- Stub end device (spider)
- Set of inserts: 630mm, 710mm, 800mm, 900mm
- Main clamp OD: 1000mm

| CODE | DESCRIPTION |
|----------|--------------------------------------|
| 120-0100 | UFUSE SMA Butt Fusion Welder- 1000mm |
| 120-0101 | UFUSE Stub Holder Device- 1000mm |



UFUSE 1200 Butt Welder

The Ufuse 1200 butt fusion welding machine is perfect for butt-welding polyethylene pipes with an outside diameter between 630 mm and 1200 mm diameter.

Key Features:

- Extractable heating plate and milling cutter
- 4 jaw main carriage
- Electro-hydraulic gear-case
- Heating plate and milling cutter support
- Tool kit
- Stub end device (spider)
- Set of inserts: 630mm, 710mm, 800mm, 900mm
- Main clamp OD: 1200mm

| CODE | DESCRIPTION |
|----------|--------------------------------------|
| 120-0120 | UFUSE SMA Butt Fusion Welder- 1200mm |
| 120-0121 | UFUSE Stub Holder Device- 1200mm |



RITMO EASYLIFE BUTT WELDERS

The Ritmo Easylife Butt Welder uses the same practical design as the Ritmo Basic, but may employ an electric hydraulic gear-case to automate the welding process. Once the operators have confirmed the welding parameters, they need only to acknowledge the work phases by pushing a button. The gear case will make pressure adjustments during the weld phase if required.

The easy life system has built in data logging capabilities that can store up to 4000 welds, which can be downloaded to a USB drive. The width of the jaws makes it easier to weld fittings such as stub flanges and elbows, and the fourth jaw can be removed for intricate spool fabrication.

RITMO EASYLIFE Butt Welder 160

Complete with a machine body, including:

- Extractable heating plate and milling cutter
- Automatic hydraulic gear-case with build-in data logging capabilities
- Heating plate and milling cutter support
- Tool kit
- Set of inserts for OD 40, 50, 63, 75, 90, 110, 125, 140mm
- Main clamp for OD 160mm

| CODE | DESCRIPTION |
|----------|--|
| 110-2016 | Ritmo EASYLIFE Butt Welding Machine- 160mm |

RITMO EASYLIFE Butt Welder 250

Complete with a machine body, including:

- Extractable heating plate and milling cutter
- Automatic hydraulic gear-case with build-in data logging capabilities
- Heating plate and milling cutter support
- Tool kit
- Crane available
- Set of inserts OD 75, 90, 110, 125, 140, 160, 180, 200, 225mm
- Main clamp for OD 250mm

| CODE | DESCRIPTION |
|----------|--|
| 110-2025 | Ritmo EASYLIFE Butt Welding Machine- 250mm |



RITMO EASYLIFE BUTT WELDERS

RITMO EASYLIFE Butt Welder 355

Complete with a machine body, including:

- Extractable heating plate and milling cutter
- Automatic hydraulic gear-case with build-in data logging capabilities
- Heating plate and milling cutter support
- Tool kit
- Crane available
- Set of inserts OD 125, 140, 160, 180, 200, 225, 250, 280, 315mm
- Main clamp for OD 355mm



| CODE | DESCRIPTION |
|----------|--|
| 110-2035 | Ritmo EASYLIFE Butt Welding Machine- 355mm |

RITMO EASYLIFE Butt Welder 500

Complete with a machine body, including:

- Extractable heating plate and milling cutter
- Automatic hydraulic gear-case with build-in data logging capabilities
- Heating plate and milling cutter support
- Tool kit
- Crane available
- Set of inserts OD 200, 225, 250, 280, 315, 355, 400, 450mm
- Main clamp for OD 500mm



| CODE | DESCRIPTION |
|----------|--|
| 110-2050 | Ritmo EASYLIFE Butt Welding Machine- 500mm |

RITMO EASYLIFE Butt Welder 630

Complete with a machine body, including:

- Extractable heating plate and milling cutter
- Automatic hydraulic gear-case with build-in data logging capabilities
- Heating plate and milling cutter support
- Tool kit
- Crane available
- Set of inserts OD 280, 315, 355, 400, 450, 500, 560mm
- Main clamp for OD 630mm



| CODE | DESCRIPTION |
|----------|--|
| 110-2063 | Ritmo EASYLIFE Butt Welding Machine- 630mm |

RITMO BASIC BUTT WELDERS

The Ritmo Basic Butt Welder is designed for simple and easy operation when butt welding.

This cost effective option gives you greater control over the welding process with manual levers for operation. The width of the jaws makes it easier to weld fittings such as stub flanges and elbows, and the fourth jaw can be removed for intricate spool fabrication.

*Optional Crane Available for 250 - 630 butt welders.

RITMO Basic Welder 160

Complete with a machine body, including:

- Extractable heating plate and milling cutter
- 4 jaw main carriage
- Manual electro-hydraulic gear-case
- Heating plate and milling cutter support
- Set of inserts: OD 40, 50, 63, 75, 90, 110, 125, 140mm.
- Main clamp: OD 160mm

| CODE | DESCRIPTION |
|----------|---|
| 101-1016 | Ritmo Basic Butt Welding Machine- 160mm |



RITMO Basic Welder 250

Complete with a machine body, including:

- Extractable heating plate and milling cutter
- 4 jaw main carriage
- Manual electro-hydraulic gear-case
- Heating plate and milling cutter support
- Set of inserts: OD 75, 90, 110, 125, 140, 160, 180, 200, 225mm
- Main clamp: OD 250mm
- Optional crane available

| CODE | DESCRIPTION |
|----------|---|
| 101-1025 | Ritmo Basic Butt Welding Machine- 250mm |



RITMO BASIC BUTT WELDERS

RITMO Basic Welder 355

Complete with a machine body, including:

- Extractable heating plate and milling cutter
- 4 jaw main carriage
- Manual electro-hydraulic gear-case
- Heating plate and milling cutter support
- Set of inserts: OD 125, 140, 160, 180, 200, 225, 250, 280, 315mm
- Main clamp: OD 355mm
- Optional crane available

| CODE | DESCRIPTION |
|----------|---|
| 101-1035 | Ritmo Basic Butt Welding Machine- 355mm |

RITMO Basic Welder 500

Complete with a machine body, including:

- Extractable heating plate and milling cutter
- 4 jaw main carriage
- Manual electro-hydraulic gear-case
- Heating plate and milling cutter support
- Set of inserts: OD 200, 225, 250, 280, 315, 355, 400, 450mm
- Main clamp: OD 500mm
- Optional crane available

| CODE | DESCRIPTION |
|----------|---|
| 101-1050 | Ritmo Basic Butt Welding Machine- 500mm |

RITMO Basic Welder 630

Complete with a machine body, including:

- Extractable heating plate and milling cutter
- 4 jaw main carriage
- Manual electro-hydraulic gear-case
- Heating plate and milling cutter support
- Set of inserts: 280, 315, 355, 400, 450, 500, 560mm
- Main clamp: OD 630mm
- Optional crane available

| CODE | DESCRIPTION |
|----------|---|
| 101-1063 | Ritmo Basic Butt Welding Machine- 630mm |



DIXON BUTT WELDERS

The Dixon Butt Welder is the benchmark for reliability and robust design, with manufacturing in Australia. These machines require low maintenance and are designed for trench and surface welding. All Dixon heater plates use a replaceable non-stick cloth system that can be easily swapped on site to reduce welder downtime. With local manufacturing, parts are readily available for rapid repairs.

DIXON MV70 Butt Welder

- Extractable and electric heating plate and milling cutter
- Compact 2 jaw main carriage
- Manual torque wrench lever operation
- Carry case and tool accessories
- Set of inserts: 32, 40, 50 and 63mm
- Main clamp OD: 63mm
- Rural pipe liner set is for 1 1/4", 1 1/2", 2" pipe

| CODE | DESCRIPTION |
|----------|---------------------------|
| 134-0050 | Dixon MV70 But Welder |
| 134-0051 | MV70 Metric Liner Set |
| 134-0052 | MV70 Rural Pipe Liner Set |



DIXON LF110 Butt Welder

- Extractable and electric heating plate and milling cutter
- Compact 2 jaw main carriage
- Manual torque wrench lever operation
- Carry case and tool accessories
- Set of inserts: 32, 40, 50, 63, 75, 90 and 110mm
- Main clamp OD: 110mm

| CODE | DESCRIPTION |
|----------|--------------------------|
| 134-0100 | DIXON LF110 Butt Welder |
| 134-0101 | LF110 Reducing Liner Set |



DIXON HF225 Butt Welder

- Extractable and electric heating plate and milling cutter
- 4 jaw main carriage
- Manual self-contained hydraulic hand-pump
- Carry case and tool accessories
- Detachable wheel assembly
- Stub device
- Set of inserts: 63, 75, 90, 110, 125, 140, 160, 180, 200, and 225mm
- Main clamp OD: 225mm

| CODE | DESCRIPTION |
|----------|------------------------------|
| 134-0150 | DIXON HF225 Butt Welder |
| 134-0151 | DIXON 225 Reducing Liner Set |



DIXON EHF225 Butt Welder

- Extractable and electric heating plate and milling cutter
- 4 jaw main carriage
- Electrohydraulic power pack with three independent pressure controls which can be pre-set.
- Carry case and tool accessories
- Detachable wheel assembly
- Stub device
- Set of inserts: 63, 75, 90, 110, 125, 140, 160, 180, 200, and 225mm
- Main clamp OD: 225mm.

| CODE | DESCRIPTION |
|----------|------------------------------|
| 134-0200 | DIXON EHF225 Butt Welder |
| 134-0151 | DIXON 225 Reducing Liner Set |



DIXON BUTT WELDERS

DIXON HF350 Butt Welder

- Extractable and electric heating plate and milling cutter
- 4 jaw main carriage
- Carry case and tool accessories
- Detachable wheel assembly
- Stub device
- Set of inserts: 110, 125, 140, 160, 180, 200, 225, 250, 280, 315, and 355mm
- Main clamp OD: 355mm
- Manual self-contained hydraulic hand pump
- Jaw alignment mechanism

| CODE | DESCRIPTION |
|----------|------------------------------|
| 134-0250 | DIXON HF355 Butt Welder |
| 134-0251 | DIXON 355 Reducing Liner Set |



DIXON EHF350 Butt Welder

- Extractable and electric heating plate and milling cutter
- 4 jaw main carriage
- Electro-hydraulic gear-case with three independent pressure controls which can be pre-set
- Carry case and tool accessories
- Detachable wheel assembly
- Stub device
- Set of inserts: 110, 125, 140, 160, 180, 200, 225, 250, 280, 315, and 355mm
- Main clamp OD: 355mm
- Jaw alignment mechanism

| CODE | DESCRIPTION |
|----------|------------------------------|
| 134-0300 | DIXON EHF355 Butt Welder |
| 134-0251 | DIXON 355 Reducing Liner Set |



DIXON HF450 Butt Welder

- Extractable and electric heating plate and milling cutter
- 4 jaw main carriage
- Electro hydraulic power pack mounted on the main frame with three independent pressure controls which can be pre-set
- Carry case and tool accessories
- Detachable wheel assembly
- Jaw alignment mechanism
- Stub device
- Set of inserts: 200, 225, 250, 280, 315, 355, 400 and 450mm
- Main clamp OD: 450mm

| CODE | DESCRIPTION |
|----------|----------------------------|
| 134-0350 | DIXON HF450 Butt Welder |
| 134-0351 | DIXON 450 Liner Set |
| 134-0352 | DIXON 450 Stub End Device |
| 134-0353 | DIXON 450 Wheeled Assembly |

DIXON HF630 Butt Welder

- Extractable and electric heating plate and milling cutter
- 4 jaw main carriage
- Electro hydraulic power pack mounted on the main frame with three independent pressure controls which can be pre-set
- Carry case and tool accessories
- Detachable wheel assembly
- Jaw alignment mechanism
- Stub device
- Set of inserts: 355, 400, 450, 500, 560 and 630mm
- Main clamp OD: 630mm

| CODE | DESCRIPTION |
|----------|----------------------------|
| 134-0400 | DIXON HF630 Butt Welder |
| 134-0401 | DIXON 630 Liner Set |
| 134-0402 | DIXON 630 Stub End Device |
| 134-0403 | DIXON 630 Wheeled Assembly |



DIXON BUTT WELDERS

DIXON H1000 Butt Welder

- Extractable and electric heating plate and milling cutter
- 4 jaw main carriage
- Electro hydraulic power pack mounted on the main frame with three independent pressure controls which can be pre-set
- Carry case and tool accessories
- Detachable wheel assembly
- Jaw alignment mechanism & hydraulic clamp locking
- Stub device
- Set of inserts: 630, 710, 800, 900 and 1000mm
- Main clamp OD: 1000mm

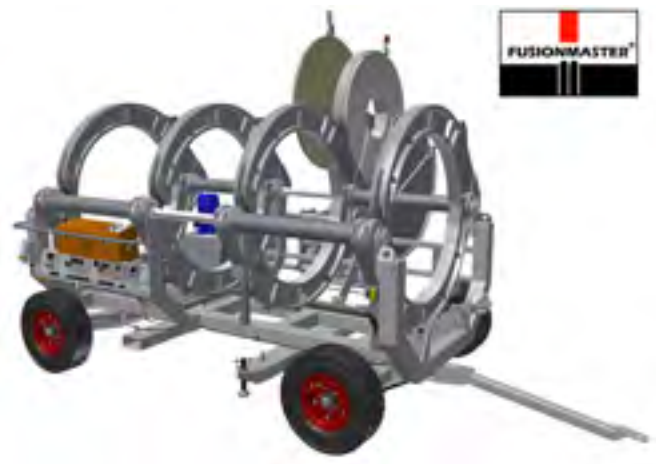
| CODE | DESCRIPTION |
|----------|--------------------------|
| 134-0450 | DIXON HF1000 Butt Welder |
| 134-0457 | DIXON 1000 Liner Set |



DIXON H1200 Butt Welder

- Extractable and electric heating plate and milling cutter
- 4 jaw main carriage
- Electro hydraulic power pack mounted on the main frame with three independent pressure controls which can be pre-set
- Carry case and tool accessories
- Detachable wheel assembly
- Jaw alignment mechanism & hydraulic clamp locking
- Stub device
- Set of inserts: 710mm, 800mm, 900mm, 1000mm & 1200mm
- Main clamp OD: 1200mm

| CODE | DESCRIPTION |
|----------|--------------------------|
| 134-0500 | DIXON HF1200 Butt Welder |
| 134-0501 | DIXON 1200 Liner Set |



McELROY DataLogger 7

The McElroy DataLogger 7 captures the most important information related to HDPE welding, capturing your entire fusion operation.

- Document fusion joint, operator and machine details including GPS locations
- Capture electrofusion, squeeze off techniques and pressure testing data
- 14+ hour battery capacity and a hot swappable battery option
- IP68-rated rugged base tablet is waterproof, dust proof and shock proof
- Easy, simple-to-follow guided workflow
- Hard keys for easy navigation between applications
- Large, sunlight-readable 7" display with best-in-class outdoor visibility and clarity
- Automatic data backup to included SD card
- McElroy Optimized Cooling™ algorithm allows for more joints to be completed in less time



| CODE | DESCRIPTION |
|----------|----------------------|
| 172-0050 | McElroy DataLogger 7 |

PE Weld Bank

The PE Weld Bank Data Logger utilises your existing phone to record and operate the system. This also includes a library of technicals and methods for HDPE welding to easily refer to in the field.

- Bluetooth Pressure sensor, inc. ambient and humidity sensors
- Pressure Transducer & connection cable
- USB charge cable
- Bluetooth Temperature sensor
- Surface Temperature probe
- PT 100 temperature probe connection leads
- USB charge cable
- Sensors connect via Bluetooth to your smartphone or tablet



MFT-20 FAST FUSION HIRE

The Fastest and Safest Way To Fuse

Fast Fusion MobileFusion Trac20 is an all-weather fusion systems that incorporates weld bead cooling technology. By bringing fusion operations into the safety of a cab, fusion sites are safer and more productive, up to 70% more productive than conventional fusion processes.

MobileFusion Trac 12/20/36 Pipe Fusion Machines.

- User friendly design means only one operator in the cabin is required.
- Pipe fusion process inside the cabin means a controlled environment for speed and quality.
- Machine design incorporates top of line auxiliary like Caterpillar engines and drive system.
- Fully automatic system is equipped with a display screen with operator input keys for the Fast Fusion weld bead temperature control. No guess work.
- Full exterior lighting packages means no reason to stop progress as you can continue to work into the night.
- Fuses pipe 200-500mm

Operator Cabin is Designed for Production.

- 360° windows gives the operator confidence in the work being performed and work environment.
- Cab area has heating and air conditioning to provide comfortable environment.
- No need for tents or containers to manage the environment of fusing pipe. No wasted time moving extra equipment around the job site to protect the fusion process.

Weld Cooling Times are the Fastest in the Industry.

- Up too 70% faster than other methods, allowing you to complete more lengths per hour.
- Fast Fusion patented technology allows the weld cooling to take place quickly with no risk to quality.
- The Fast Fusion software defines the time for cooling each pipe.
- Wait times are reduced up to five times less than conventional fusion machine.

Fast fusion's MobileFusion Trac technology will significantly increase the production capacity and number of fusion welds produced per hour over any other machine offered in the industry.



MCELROY BUTT WELDERS

McElroy 900i Series

- **Fully Automatic:** Self-contained, self-propelled, all-terrain fusion machine with an on-board generator.
- **Hydraulically Powered:** Assists all fusion functions including jaws, pipe lifts, heater, and facer operations.
- **High-Force Cylinders:** Capable of fusing 450-900mm HDPE pipe.
- **Rugged Track System:** Facilitates all-terrain welding by evenly dispersing machine weight, preventing sinking during movement and welding.
- **Clean-Burning Engine:** Equipped with an ultra-low sulfur diesel engine with near-zero emissions.
- **Redesigned Cowling:** Easily removable for machine maintenance.
- **Integrated DataLogger Tablet:** Controls all fusion functions, records joint data, and uploads reports to the McElroyDataLoggervault for storage and analysis.
- **Wireless Remote Driving Control:** Included for enhanced maneuverability and ease of use.



McElroy T618

- **Redesigned Based on Feedback:** Shares a common vehicle with the 28, 250, and 412 TracStars.
- **Diesel Engine:** Suitable for job-sites where gasoline is not permitted.
- **Fusion Range:** Butt fuses pipe sizes from 6" IPS to 18" OD (180mm to 450mm).
- **Self-Contained and Self-Propelled:** Track-mounted vehicle handles grades up to 30 percent.
- **Enhanced Maintenance Access:** New cowling design aids in heat dissipation.
- **Improved Electrical System:** Increases circuit protection with a standard battery disconnect for easy lockout.
- **Interchangeable 4-Jaw Carriage:** Easily removable for in-ditch fusions, can convert to a 3-jaw carriage for tight installations.
- **Automated Version Available:** Guides the operator through fusing steps with automated control over heat, soak, fuse, and cool cycles.



McElroy T500 Series 3

- **Fusion Range:** Butt fuses HDPE pipe between 200-500mm.
- **Powered Facer and Heater:** Indexer-mounted, powered by on-board generator
- **Mobility and Productivity:** Known for ease of use.
- **All-Terrain:** Rugged track system prevents sinking.
- **Fuel Efficiency:** Economic engine throttle setting.
- **Enhanced Functionality:** Dual hydraulic pipe lifts.
- **Optional Features:** Hydraulic clamping and automatic control.
- **Safety and Usability:** Built-in heater plate, hydraulic jaw locking, longer carriage.
- **DataLogger Compatible:** For data recording and analysis.
- **In-Ditch Kit:** For in-trench welding.



McElroy T500 Series 2

- **Fusion Range:** Butt fuses HDPE pipe between 200-500mm.
- **Powered Facer:** Indexer-mounted, powered by on-board generator.
- **Mobility and Productivity:** Known for ease of use.
- **All-Terrain:** Rugged track system prevents sinking.
- **Fuel Efficiency:** Economic engine throttle setting.
- **Enhanced Functionality:** Dual hydraulic pipe lifts.
- **Heated Plates:** Two manually operated plates cover the full pipe range.
- **DataLogger Compatible:** For data recording and analysis.
- **In-Ditch Kit:** For in-trench welding.



MCELROY BUTT WELDERS

McElroy T412 Butt Welder

- **Fusion Range:** Welds 110-315mm HDPE pipe.
- **Powered by Generator:** Onboard generator for power.
- **Safety and User-Friendliness:** Battery disconnect for lockout procedures, upgraded electrical system for increased circuit protection.
- **All-Terrain:** Rugged track system prevents sinking.
- **DataLogger Compatible:** For data recording and analysis.
- **In-Ditch Kit:** Carriage can be paired for in-trench welding.



McElroy Rolling 250

- **Fusion Range:** Butt fuses HDPE pipe between 90-250mm.
- **Portable Design:** Wheeled for easy maneuvering and portability.
- **DataLogger Compatible:** For data recording and analysis.
- **In-Ditch Kit:** Carriage can be paired for in-trench welding.
- **Medium Force Cylinders:** Suitable for high and low-pressure welding.



In-Ditch Kit

Set of four 25' hydraulic extension hoses and extension cables and pendant strap. This kit is required for automated in-ditch fusion.



VAC LIFTER (GPE PL1500)

VAC LIFTER (GPE PL1500)

The VAC LIFTER is a versatile lifting and handling equipment designed for efficient and safe pipe transportation.

Equipped with a vacuum system, it securely adheres to various surfaces, enabling effortless lifting and moving of heavy objects without the need for slings or hooks.

Applications

- Mining
- Civil construction
- Moving large quantities of HDPE pipe
- Loading and unloading trucks

Note: Please consult the hire team for specific technical specifications and operating instructions.

| SIZE (MM) | SWL (kg) |
|-------------------|----------|
| Pad 315-400 | 1250 |
| Pad 500-675 | 2500 |
| Pad 675-850 | 3000 |
| Pad 860-1080 | 4500 |
| Pad 1200-1400 | 5000 |
| Spreader Bar 9000 | 5000 |
| Spreader Bar 2000 | 5000 |

FEATURES

INCREASED EFFICIENCY:

The Vac Lifter's powerful vacuum system enables quick and easy lifting and handling of pipe, minimizing downtime and maximizing productivity.

SAFETY:

The secure vacuum grip eliminates the risk of materials slipping or falling, ensuring a safer working environment for your crew.

FAST & EFFICIENT PIPE HANDLING SOLUTION

Compared to traditional methods like cranes or forklifts, the Vac Lifter offers a more economical solution for lifting and handling heavy materials.

MULTIPLE PAD SIZES & SPREADER BEAMS:

Choose from a range of pad sizes and spreader beams to accommodate different object weights and dimensions.

EXCAVATOR COMPATIBILITY:

An adjustable hitch that will fit most excavators, the Vac Lifter is designed for easy operation with excavators over 15t, requiring a bi-directional hydraulic flow of 100-250 Lpm and a working load limit (WLL) of 15,000kg.



PIPE ROLLERS

Pipe Roller: 63-400mm

Height adjustable pipe rollers, suitable for pipe sizes ranging from 63mm to 400mm.

| CODE | DESCRIPTION |
|----------|--|
| 171-0020 | Pipe Roller 63-400mm. Height Adjustable |
| PRO400A | Pipe Roller 90-500mm Height Adjustable 600kg Load Rated |
| PRO710A | Pipe Roller 180-710mm Height Adjustable 600kg Load Rated |



RITMO High Stand Roller: 355mm

- Working Range Max: Ø355mm
- Dimensions: 1421W x 600D x 818H
- Weight: 33Kg
- Weight Capacity: 1000Kg



| CODE | DESCRIPTION |
|----------|--------------------------|
| 171-1035 | High Stand Roller- 355mm |

RITMO High Stand Roller: 630mm

- Working Range Max: Ø630mm
- Dimensions: 1766W x 800D x 982H
- Weight: 55Kg
- Weight Capacity: 2000Kg



| CODE | DESCRIPTION |
|----------|--------------------------|
| 171-1063 | High Stand Roller- 630mm |

Internal Pipe Debeader: 90-630mm

Designed to remove the internal bead from a completed butt fusion weld.

| CODE | DESCRIPTION |
|----------|--------------------------------------|
| 170-1011 | Internal Debeader Head- 90 to 110mm |
| 170-1016 | Internal Debeader Head- 125 to 160mm |
| 170-1020 | Internal Debeader Head- 160 to 200mm |
| 170-1031 | Internal Debeader Head- 225 to 315mm |
| 170-1050 | Internal Debeader Head- 355 to 500mm |
| 170-1063 | Internal Debeader Head- 560 to 630mm |
| 170-1001 | Alloy Rod Set 13m, in carry bag |



External Pipe Debeader

Designed to remove the external bead from a completed butt fusion weld.

The tool locks onto the pipe bead, then the alignment blocks slide against the pipe surface to guide it around the pipe. The blade cuts under the bead and the handle helps pull the tool around the pipe, cutting the bead away.

| CODE | DESCRIPTION |
|----------|-------------------------------------|
| 170-2012 | External Pipe Debeader- 63 to 125mm |
| 170-2040 | External Pipe Debeader 90 to 400mm |
| 170-2120 | External Pipe Debeader- 400- 1200mm |



Countdown Fusion Timer

The ideal timer for keeping track of heat, soak and fusion weld times to ensure an accurate weld cycle.

| CODE | DESCRIPTION |
|----------|----------------|
| 701-0100 | Acu-Tech Timer |



ANCILLARY ITEMS

Acu-Tech Disposable Poly Welding Wipes

Poly Welding Isopropyl Wipes for HDPE pipe removes contaminants which could potentially cause fusion joint failure. Acu-Tech's convenient and safe Polyweld wipes are 90% isopropyl alcohol impregnated and come in a tub of 75. A resealable lid prevents the wipes drying out quickly.



| CODE | DESCRIPTION |
|-------------|------------------------------------|
| 99910075.90 | Acu-Tech Polyweld Wipes- Tub of 75 |

FLUKE MT4 MAX Infrared Thermometer

The Fluke MT4 MAX infrared thermometer features a single laser and 10:1 distance to spot ratio. It is small in size and extremely easy to use. The single laser helps you pinpoint the target for more accurate readings and makes it easier to measure temperatures in hard to reach areas. With its IP54 rating for dust and water resistance you can rely on the Fluke MT4 MAX to deliver accurate, repeatable temperature measurements.



| CODE | DESCRIPTION |
|----------|------------------------------------|
| 702-1050 | Fluke MT4 MAX Infrared Thermometer |

Acu-Tech Digital Surface Thermometer

Quality digital thermometer with K type probe interface. Range of -200 to 1370°. Also has a Timer Function, PC interface and Auto Power Off. (Probe ordered separated).

Surface probe suitable for heater plate check. Range of -50 to 400°C.



| CODE | DESCRIPTION |
|-------------|--|
| 05609056 | Testo 905-T2 Surface Thermometer |
| 219-000-028 | Digital Thermometer with Surface Probe |

DETECTABLE TAPE

Acu-Tech stocks a range of detectable underground marking tapes, offering a superior level of protection and detectability for buried utilities. Pipe mains marker tapes or detectable underground warning tapes provide an early warning and detectable signal to help identify the location of underground pipelines.

The tape is coloured and labelled according to the pipeline contents. Also known as 'visual early warning tape', pipe marking tape is laid at half-depth above the pipes for underground services, to allow for any machine operators to discover the tape before damage is caused to the pipe. The pipeline tracing tape contains a detectable wire, which allows convenient location with an electronic detector.

Acu-Tech supplies poly pipe marking tape for the following applications:

- Water pipe marking tape,
- Recycled water pipe marking tape,
- Potable water pipe marking tape,
- Gas pipe marking tape,
- Sewer pipe marking tape,
- Electricity pipe marking tape,
- Storm-water pipe marking tape,
- Communications pipe marking tape,
- Fire mains pipe marking tape.

| CODE | DESCRIPTION ON TAPE | COLOUR |
|----------|---|--------|
| 99810004 | Danger - Buried Gas Main Below | Yellow |
| 99810008 | Danger - Buried Water Main Below | Green |
| 99810003 | Danger - Buried Fire Main Below | Red |
| 99810006 | Recycled/Reclaimed Water Main Below | Purple |
| 99810001 | Danger - Communications Main buried below | White |
| 99810002 | Danger - Buried Electricity Main below | Orange |
| 99810007 | Danger - Buried Sewer Main below | Cream |





Our Capabilities

Technical Support:

We provide technical support for designers, engineers, and installers.

Training:

Through our training partner we can offer our clients the ability to train staff with nationally accredited polyethylene plastic welding courses.

QA/QC:

We are also qualified to provide Quality Assurance and Quality Control documentation.

Testing:

We have a fully accredited in-house NATA testing facility to provide destructive and pressure testing as per project requirements.

Equipment Hire, Sales, and Servicing:

Acu-Tech offers welding equipment available for hire or sale and providing servicing and calibration for welders.

Transport:

Products are delivered using our own fleet of trucks, ensuring that the product is delivered directly to site in a safe and timely manner.

**National Manufacturer
of PE piping systems**



Fabrication Services

Our fully qualified ACU-FAB team has decades of combined experience, we can fabricate almost anything from poly pipe and sheet.

We work in partnership with our clients to provide bespoke, pre-fabricated solutions and can provide a diverse range of products including custom degree bends, assemblies, spool packages, tank fabrication and strainers, manufactured in our 6000m² fully equipped fabrication facility.

We pride ourselves in working to the highest possible standards, in accordance with AS/NZS 4131, AS/NZS 4130 and AS/NZS 4129.

Equipment Hire & Servicing

Acu-Tech hires out welding equipment and provides service and calibration for welders.

Our hire division has a full range of butt welders, extrusion welders and electrofusion welders that can weld pipe diameters from 20mm up to 1000mm. This includes a wide variety of electrofusion equipment and butt welders, which can be useful if your team is trained to use a particular model.

If you are welding on a site without power supply, we also provide portable generators, designed to be used with poly welding equipment.

New equipment is available for sale if you prefer to invest in equipment upfront.

Work with Acu-Tech and a recommended financial advisor to facilitate capital equipment purchases. Contact our hire sales team for more information.

View the Equipment Hire website:
<https://acu-techhire.com.au/>





Transport & Warehouse Logistics

Our transportation yard has the capacity to load up to 15 trucks daily, accommodating a diverse range of pipes with lengths of up to 20 meters and diameters of 800mm. Our dedicated transport team is steadfast in their commitment to ensuring orders are delivered in full and on time, with safety as our top priority.

We offer a comprehensive project solution through our dedicated fleet of trucks and skilled drivers.

These professionals undergo rigorous training to guarantee efficient unloading and an unwavering commitment to delivering exceptional service.

Our large transportation fleet has the capability to accommodate a diverse range of pipes with lengths of up to 21 meters and diameters up to 1200mm.

Our dedicated transport team is steadfast in their commitment to ensuring orders are delivered in full and on time, with safety as our top priority.

With the added assurance of our overhead permits and Heavy Vehicle Accreditation, you can place full trust in us for the secure and timely delivery of your goods, ensuring a smooth transportation experience that perfectly aligns with all your project needs.

Training & Testing Facility

Polyweld Tech Academy is accredited to deliver the following Nationally Recognised plastics welder training programs:

- Join Polyethylene Plastic Pipelines using Butt Welding (PMBWELD301E)
- Join Polyethylene Plastic Pipelines using Electrofusion Welding (PMBWELD302E)
- Weld Plastic using Extrusion Techniques (PMBWELD309E)

With facilities in Brisbane, Kalgoorlie, Melbourne, South Australia, New South Wales, Perth and Queensland, Polyweld Tech Academy provides flexible on-site training at any location convenient for our clients.

Whether you are based nationwide across Australia or require offshore international training, our expert team is ready to deliver comprehensive Poly welding Training tailored to your needs.

The combination of training and testing gives us helpful insight into the areas of welding that may require attention.

For more information and course enrolments: **1300 36 7659 (GO POLY)**
info@polyweldtech.com.au | www.polyweldtech.com.au



The PE Pipe Systems Specialists



Contact us

1300 270 270

SALES@ACU-TECH.COM.AU

ABN: 68 626 756 223

WE CARE. OUR SOLUTIONS. YOUR SUCCESS.

Brisbane • Kalgoorlie • Melbourne • Perth

ACU-TECH.COM.AU

V01.24